
Supplement



Let us introduce our latest cutting tools and solutions

Read more about our newly released products and dive deeper into the pool of knowledge at our online version of the supplement.

Latest cutting tools and solutions

- Available in 20 languages
- Extensive technical information
- Links directly to the specific tools

[View online now](#)



General turning	A
Parting and Grooving	B
Milling	C
Rotating tool adaptors	E
Accessories	F
General information	G

General turning

CoroTurn® Prime

Inserts	4-9
External tools	15-22
Internal tools	23-26

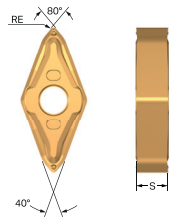
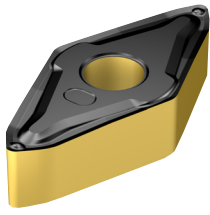
CoroTurn® 107

Inserts	10-14
---------	-------

For complete assortment, see www.sandvik.coromant.com

CoroTurn® Prime insert for turning

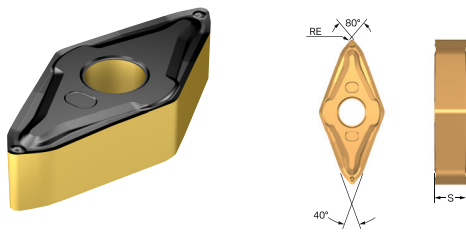
B-type insert



				P	M	S
	SSC	S	RE	4415	2220	H13A
	CP-B12..D	6.00	0.8	★	★	★
			ISO CODE	4425	2220	H13A
			CP-B1208D-L4	☆	☆	☆
Finishing						
						S205
						★

CoroTurn® Prime insert for turning

B-type insert

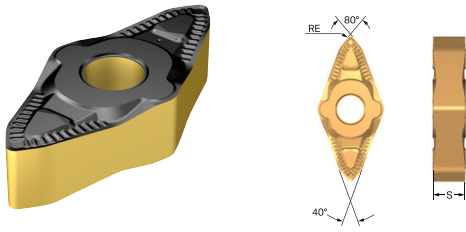


			P	
SSC	S	RE	ISO CODE	
CP-B12..D	6.00	0.8	CP-B1208D-L4W	★ 4415 ☆ 4425

Finishing

CoroTurn® Prime insert for turning

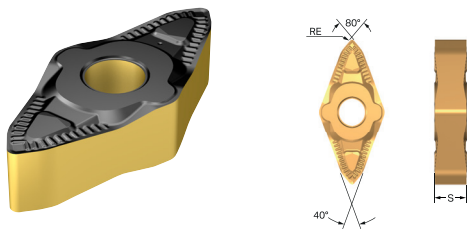
B-type insert



				P	M	K	S			
	SSC	S	RE	4415	4425	1115	2025	4415	4425	1115
	CP-B12..D	6.00	0.8	☆	★	☆	★	★	☆	★
			ISO CODE							
			CP-B1208D-M5							
Medium										

CoroTurn® Prime insert for turning

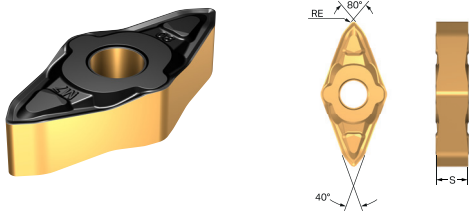
B-type insert



			P	M	K			
	SSC	S RE	4415	4425	2025	4415	4425	
	CP-B12..D	6.00 0.8	CP-B1208D-M5W	☆	★	★	★	☆
Medium								

CoroTurn® Prime insert for turning

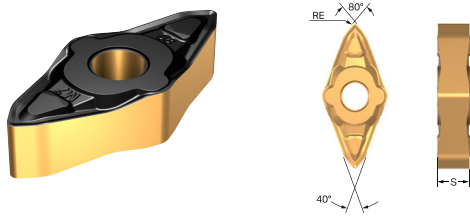
B-type insert



	SSC	S	RE	ISO CODE	P		M		K		S					
					4415	4425	H13A	1115	2220	H13A	4415	4425	H13A	1115	H13A	S205
Medium	CP-B12..D	6.00	0.8	CP-B1208D-M7	☆	★	☆	☆	★	☆	☆	★	★	☆	☆	☆
			1.6	CP-B1216D-M7	☆	★	☆	☆	★	☆	☆	★	★	☆	☆	☆

CoroTurn® Prime insert for turning

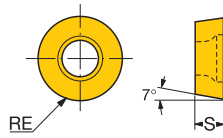
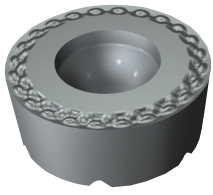
B-type insert




			P	M	K	S			
	SSC	S RE	4415	4425	1115	4415	4425	1115	
	CP-B12..D	6.00 0.8	CP-B1208D-M7W	☆	★	★	★	☆	★
Medium									

CoroTurn® 107 insert for turning

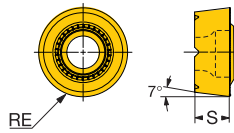
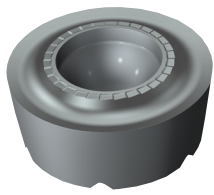
R-style insert (Round)




			P	M	K	N	S
Finishing		S RE	HT3A	HT3A	HT3A	HT3A	HT3A
	08	3.18 4.0	☆	★	★	★	★
	10	3.97 5.0	☆	★	★	★	★
	12	4.76 6.0	☆	★	★	★	★
ISO CODE			HT3A	HT3A	HT3A	HT3A	HT3A
RCGT 08 03 MP-L3			☆	★	★	★	★
RCGT 10 T3 MP-L3			☆	★	★	★	★
RCGT 12 04 MP-L3			☆	★	★	★	★

CoroTurn® 107 insert for turning

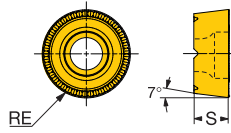
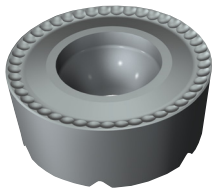
R-style insert (Round)




			P	M	K	N	S
Medium		S RE	H13A	H13A	H13A	H13A	H13A
	08 3.18 4.0	RCGT 08 03 MP-M3	*	*	*	*	*
	10 3.97 5.0	RCGT 10 T3 MP-M3	*	*	*	*	*
	12 4.76 6.0	RCGT 12 04 MP-M3	*	*	*	*	*

CoroTurn® 107 insert for turning

R-style insert (Round)

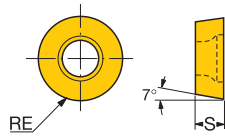
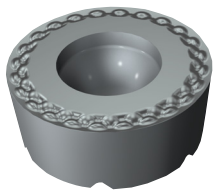



				P	M	K	N	S
Roughing		S	RE	HT3A	HT3A	HT3A	HT3A	HT3A
	08	3.18	4.0	☆	☆	☆	★	☆
	10	3.97	5.0	☆	☆	☆	★	☆
	12	4.76	6.0	☆	☆	☆	★	☆
	16	6.35	8.0	☆	☆	☆	★	☆
ISO CODE				HT3A	HT3A	HT3A	HT3A	HT3A
RCMT 08 03 MP-H7				☆	☆	☆	★	☆
RCMT 10 T3 MP-H7				☆	☆	☆	★	☆
RCMT 12 04 MP-H7				☆	☆	☆	★	☆
RCMT 16 06 MP-H7				☆	☆	☆	★	☆

ENG

CoroTurn® 107 insert for turning

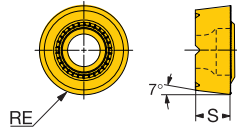
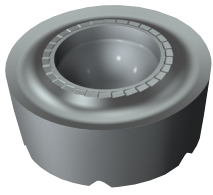
R-style insert (Round)




				P	M	K	S
Finishing		S	RE	ISO CODE	H13A	H13A	H13A
	16	6.35	8.0	RCMT 16 06 MP-L3	☆	☆	☆

CoroTurn® 107 insert for turning

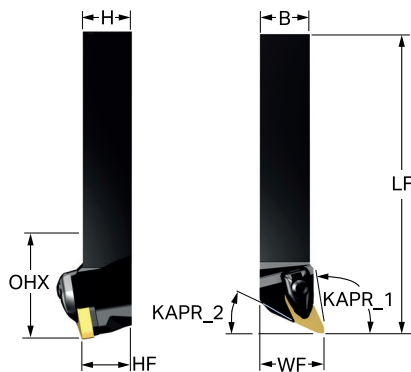
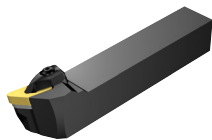
R-style insert (Round)



				P	M	K	S
Medium		S	RE	HT3A	HT3A	HT3A	HT3A
	16	6.35	8.0	☆	☆	☆	☆
		ISO CODE		RCMT 16 06 MP-M3			

CoroTurn® Prime shank tool for turning

Rigid clamp design



Metric version

							Dimensions, mm								
	SSC	CZC _{MS}	KAPR_1	KAPR_2	OHX	Ordering code	B	H	LF	WF	HF	(NM)	(KG)	MIID	
	CP-B12..D	20 x 20	95°	25°	40.0	CP-25BR/L-2020-12	20.0	20.0	125.0	25.0	20.0	4.0	0.36	CP-B1208D	
		25 x 25	95°	25°	50.0	CP-25BR/L-2525-12	25.0	25.0	150.0	32.0	25.0	4.0	0.69	CP-B1208D	
		32 x 32	95°	25°	64.0	CP-25BR/L-3232-12	32.0	32.0	170.0	40.0	32.0	4.0	1.27	CP-B1208D	

Inch version

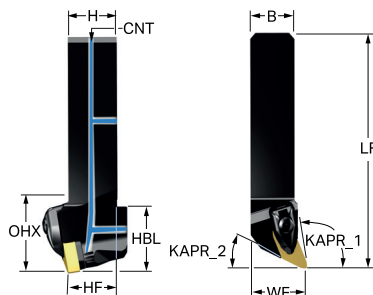
							Dimensions, inch								
	SSC	CZC _{MS}	KAPR_1	KAPR_2	OHX	Ordering code	B	H	LF	WF	HF	(FT/LBS)	(LBS)	MIID	
	CP-B12..D	3/4 x 3/4	95°	25°	1.496	CP-25BR/L-12-12	.750	.750	4.500	1.000	.750	3.0	0.661	CP-B1208D	
		1 x 1	95°	25°	1.969	CP-25BR/L-16-12	1.000	1.000	6.000	1.250	1.000	3.0	1.583	CP-B1208D	
		1 1/4 x 1 1/4	95°	25°	2.520	CP-25BR/L-20-12	1.250	1.250	6.000	1.498	1.250	3.0	2.441	CP-B1208D	

R = Right hand, L = Left hand

CoroTurn® Prime QS shank tool for turning

Rigid clamp design

Internal coolant supply



Metric version

		Dimensions, mm																	
		SSC	CZC _{MS}	KAPR_1	KAPR_2	OHX	CNSC	Ordering code	B	H	HBL	LF	WF	HF	CNT	BAR	NM	KG	MIID
	CP-B12..D	20 x 20	95°	25°	52.0	3	QS-CP-25BR/L-2020-12B	20.0	20.0	32.0	101.0	25.0	20.0	G 1/8-28	150	4.0	0.29	CP-B1208D	
		25 x 25	95°	25°	57.0	3	QS-CP-25BR/L-2525-12B	25.0	25.0	32.0	116.0	32.0	25.0	G 1/8-28	150	4.0	0.51	CP-B1208D	

Inch version

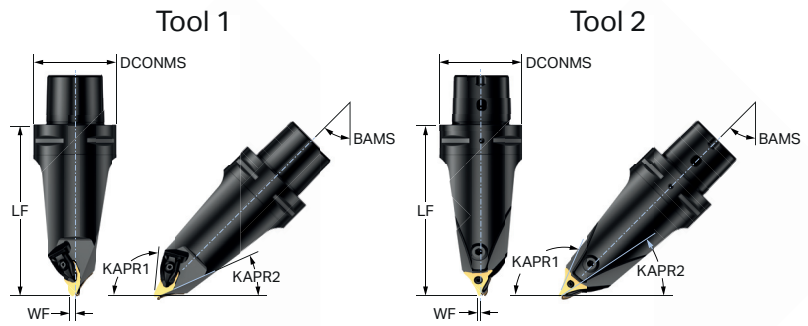
		Dimensions, inch																	
		SSC	CZC _{MS}	KAPR_1	KAPR_2	OHX	CNSC	Ordering code	B	H	HBL	LF	WF	HF	CNT	PSI	FT/LBS	LBS	MIID
	CP-B12..D	3/4 x 3/4	95°	25°	2.008	3	QS-CP-25BR/L-12-12B	.750	.750	1.260	3.976	1.000	.750	G 1/8-28	2175	3.0	0.586	CP-B1208D	
		1 x 1	95°	25°	2.244	3	QS-CP-25BR/L-16-12B	1.000	1.000	1.260	4.567	1.250	1.000	G 1/8-28	2175	3.0	1.162	CP-B1208D	

R = Right hand, L = Left hand

CoroTurn® Prime cutting unit for turning

Twin tool

Coromant Capto® - Internal coolant supply

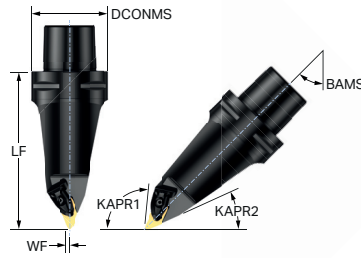


		Dimensions, mm, inch														
CZG _{MS}	KAPR_1	KAPR_2	OHX	CNCS	Ordering code	DCON _{MS}	LF ₁	LF ₂	WF ₁	WF ₂	HF	OAH	BAR PSI	NM	KG	MIID
			5.118			2.480	5.118	5.118	.079	.079	.787	2.559	2175			
C8	95°	115°	160.0	3	C8-T-A11B12L-160	80	160.0	160.0	2.0	2.0	25.0	80.0	150	4.0	4.63	CP-B1208D, CP-A1108
			6.299			3.150	6.299	6.299	.079	.079	.984	3.149	2175			

CoroTurn® Prime cutting unit for turning

Rigid clamp design

Coromant Capto® - Internal coolant supply

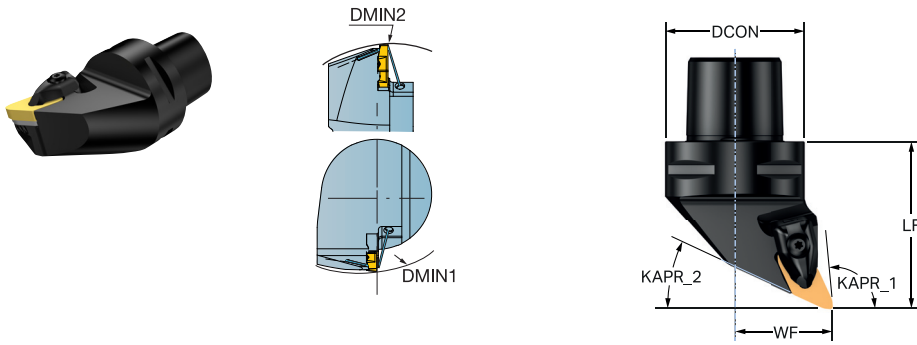


							Dimensions, mm, inch						
SSC	CZC _{MS}	KAPR_1	KAPR_2	CNSC	Ordering code	DCON _{MS}	LF	WF	BAR PSI	NM	KG	MIID	
	CP-B12.D	C5	95°	25°	3	C5-CP-70BL00115-12B	50	115.0	0.0	150	4.0	1.14	CP-B1208D
		C6	95°	25°	3	C6-CP-70BL00130-12B	63	130.0	0.0	150	4.0	1.96	CP-B1208D
		C8	95°	25°	3	C8-CP-70BL00160-12B	80	160.0	0.0	150	4.0	4.11	CP-B1208D
							3.150	6.299	.000	2175			

CoroTurn® Prime cutting unit for turning

Rigid clamp design

Coromant Capto® - Internal coolant supply



								Dimensions, mm, inch							MIID
	SSC	CZC _{MS}	DMIN ₁	DMIN ₂	KAPR ₁	KAPR ₂	CNSC	Ordering code	DCON _{MS}	LF	WF	$\begin{matrix} \text{BAR} \\ \text{PSI} \end{matrix}$	$\begin{matrix} \text{NM} \\ \text{KG} \end{matrix}$		
	CP-B12.D	C4	80.0	150.0	95°	25°	3	C4-CP-25BR/L-27060-12B	40	60.0	27.0	150	4.0	0.42	CP-B1208D
			3.150	5.906	95°	25°			1.575	2.362	1.063	2175			
	C5	85.0	165.0	95°	25°	3	C5-CP-25BR/L-35060-12B	50	60.0	35.0	150	4.0	0.65	CP-B1208D	
		3.346	6.496	95°	25°			1.969	2.362	1.378	2175				
	C6	90.0	190.0	95°	25°	3	C6-CP-25BR/L-45065-12B	63	65.0	45.0	150	4.0	1.14	CP-B1208D	
		3.543	7.480	95°	25°			2.480	2.559	1.772	2175				

R = Right hand, L = Left hand

CoroTurn® Prime cutting unit for turning

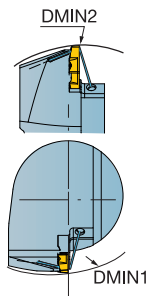
Screw clamp design

Coromant Capto® - Internal coolant supply

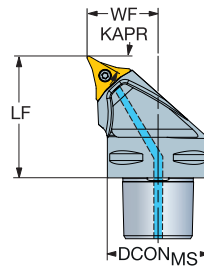


CP-A

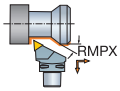
PSIR



-25.0°



SSC	CZC _{MS}	DMIN ₁	DMIN ₂	RMPX	CNCS	Ordering code	Dimensions, mm, inch						MIID
							DCON _{MS}	LF	WF	$\begin{matrix} \text{BAR} \\ \text{PSI} \end{matrix}$	$\begin{matrix} \text{NM} \\ \text{KG} \end{matrix}$	$\begin{matrix} \text{KG} \\ \text{LBS} \end{matrix}$	
CP-A	C3	85.0	125.0	15°	3	C3-CP-30AR/L-22045-11C	32	45.0	22.0	150	4.0	0.20	CP-A1108
		3.346	4.921				1.260	1.772	.866	2175			

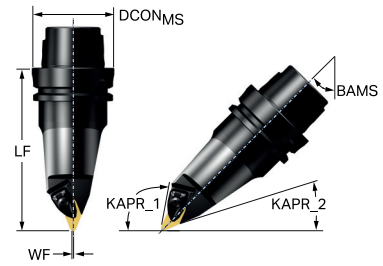


R = Right hand, L = Left hand

CoroTurn® Prime cutting unit for turning

Rigid clamp design

HSK - Internal coolant supply

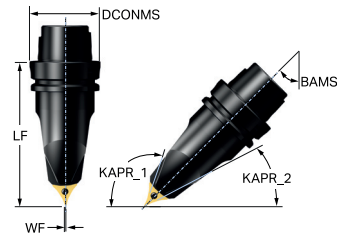
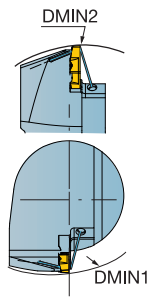


						Dimensions, mm, inch						
SSC	CZC _{MS}	KAPR_1	KAPR_2	CNSC	Ordering code	DCON _{MS}	LF	WF	BAR PSI	NM	KG	MIID
CP-B12.D	63	95°	25°	3	HT06-CP70BL00130-12B	63	130.0	0.0	150	4.0	1.82	CP-B1208D
						2.480	5.118	.000	2175			

CoroTurn® Prime cutting unit for turning

Screw clamp design

HSK - Internal coolant supply

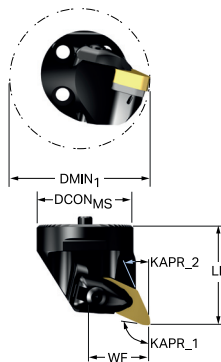


						Dimensions, mm, inch						
SSC	CZC _{MS}	KAPR_1	KAPR_2	CNSC	Ordering code	DCON _{MS}	LF	WF	BAR PSI	NM	KG	MIID
CP-A	63	115°	30°	3	HT06-CP75AL00130-11C	63	130.0	0.0	150	4.0	1.88	CP-A1108
						2.480	5.118	.000	2175			

CoroTurn® Prime head for turning

Rigid clamp design

CoroTurn® SL - Internal coolant supply



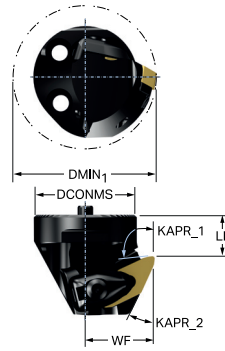
							Dimensions, mm, inch						
SSC	CZC _{MS}	DMIN ₁	KAPR ₁	KAPR ₂	CNSC	Ordering code	DCON _{MS}	LF	WF	BAR PSI	NM	KG	MIID
CP-B12.D	40	50.0	95°	25°	1	SL-CP-25BR/L-40-12B	40	40.0	27.0	150	4.0	0.24	CP-B1208D
		1.969					1.575	1.575	1.063	2175			

R = Right hand, L = Left hand

CoroTurn® Prime head for turning

Rigid clamp design

CoroTurn® SL - Internal coolant supply



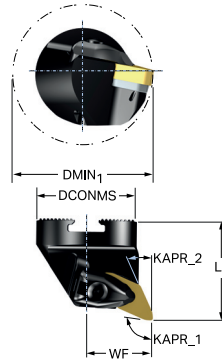
							Dimensions, mm, inch							
SSC	CZC _{MS}	DMIN ₁	KAPR_1	CNSC	Ordering code	DCON _{MS}	LPR	LF	WF	BAR PSI	NM	KG	MIID	
CP-B12.D	40	50.0	25°	1	SL-CP-X-25BR/L-40-12B	40	38.0	16.0	27.0	150	4.0	0.21	CP-B1208D	
		1.969				1.575	1.496	.630	1.063	2175				

R = Right hand, L = Left hand

CoroTurn® Prime head for turning

Rigid clamp design

Wedge Lock

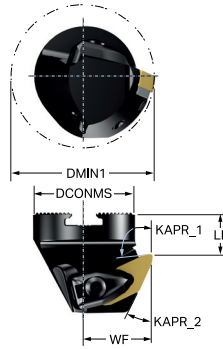


							Dimensions, mm, inch						
SSC	CZC _{MS}	DMIN ₁	KAPR ₁	KAPR ₂	CNSC	Ordering code	DCON _{MS}	LF	WF	BAR PSI	NM	KG	MIID
CP-B12.D	40	50.0	95°	25°	6	TICP-W4R/L-B1225-27B	40	40.0	27.0	150	4.0	0.19	CP-B1208D
		1.969	95°	25°			1.575	1.575	1.063	2175			

R = Right hand, L = Left hand

CoroTurn® Prime head for turning

Rigid clamp design



							Dimensions, mm, inch							
SSC	CZC _{MS}	DMIN ₁	KAPR ₁	KAPR ₂	CNSC	Ordering code	DCON _{MS}	LPR	LF	WF	BAR PSI	NM	KG	MIID
CP-B12.D	40	50.0	95°	25°	6	TICP-W4R/L-B1225X27B	40	38.0	16.0	27.0	150	4.0	0.21	CP-B1208D
		1.969	95°	25°			1.575	1.496	.630	1.063	2175			

R = Right hand, L = Left hand

Parting and grooving

CoroCut® QI

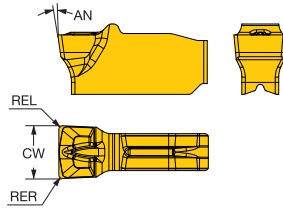
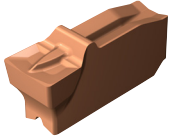
Inserts	28
Internal tools	29-30

CoroCut® 2

Internal tools	35-34
----------------	-------

For complete assortment, see www.sandvik.coromant.com

CoroCut® QI insert for grooving



						P	M	K	N	S	Dimensions, mm, inch						
		SSC	CW	REL	RER	Ordering code					AN	CWTOLL	CWTOLU	RETOLL	RETOLU		
Finishing		H	3.96	0.20	0.20	QI-NH-0396-0002-GF	★					8°	-0.020	0.020	-0.050	0.050	
			.156	.008	.008												
			4.00	0.20	0.20	QI-NH-0400-0002-GF	★	☆	☆	☆	☆	8°	-0.020	0.020	-0.050	0.050	
			.157	.008	.008												
			4.70	0.30	0.30	QI-NH-0470-0003-GF	★		★		★	8°	-0.020	0.020	-0.050	0.050	
			.185	.012	.012												
			4.80	0.30	0.30	QI-NH-0480-0003-GF	★		★		★	8°	-0.020	0.020	-0.050	0.050	
			.189	.012	.012												
			5.00	0.20	0.20	QI-NJ-0500-0002-GF	★	☆	★	☆	☆	8°	-0.020	0.020	-0.050	0.050	
			.197	.008	.008												

For circlip grooves

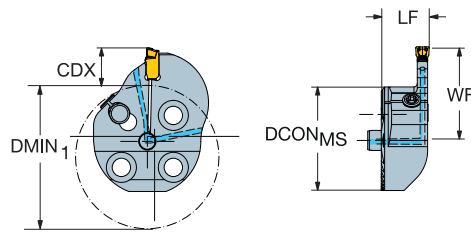
						P	M	K	N	S	Dimensions, mm, inch				
		SSC	CW	REL	RER	Ordering code					AN	CWTOLL	CWTOLU	RETOLL	RETOLU
Finishing		H	4.15	0.20	0.20	QI-NH-0415-0002-GF	★	★	★	★	8°	0.090	0.130	-0.050	0.050
			.163	.008	.008										

SSC = To correspond with SSC on holder.

N = Neutral

CoroCut® QI head for grooving

Screw clamp design



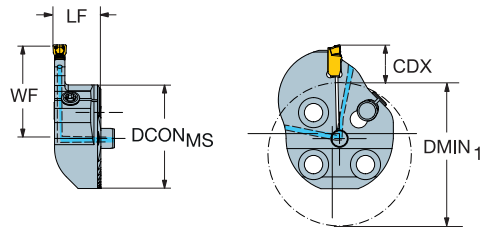
SSC	CZC _{MS}	CDX	DMIN ₁	CNCS	Ordering code	Dimensions, mm, inch							MIID
						DCON _{MS}	LF	WF	HF	BAR PSI	NM	KG	
E	16	6.0	24.0	1	SL-QI-RE06C16-24	16	14.0	19.3	0.1	150	1.5	0.01	QI-NE-0200-0002-GF
		.236	.945	.630		.551	.760	.004	2175				
F	20	8.0	30.0	1	SL-QI-RF08C20-30	20	14.0	19.3	0.1	150	1.7	0.02	QI-NF-0246-0002-GF
		.315	1.181	.787		.551	.760	.004	2175				
G	20	6.0	28.0	1	SL-QI-RG06C20-28	20	14.0	19.3	0.1	150	1.7	0.02	QI-NG-0300-0002-GF
		.236	1.102	.787		.551	.760	.004	2175				
	25	11.0	37.0	1	SL-QI-RG11C25-37	25	14.0	27.3	0.1	150	3.0	0.03	QI-NG-0300-0002-GF
		.433	1.457	.984		.551	1.075	.004	2175				
25	14.0	40.0	1	SL-QI-RG14C25-40	25	14.0	27.3	0.1	150	3.0	0.04	QI-NG-0300-0002-GF	
	.551	1.575	.984		.551	1.075	.004	2175					
H	32	14.0	48.0	1	SL-QI-RH14C32-48	32	14.0	33.8	0.1	150	3.0	0.06	QI-NH-0400-0002-GF
		.551	1.890	1.260		.551	1.331	.004	2175				
	32	17.0	50.0	1	SL-QI-RH17C32-50	32	14.0	33.8	0.1	150	3.0	0.07	QI-NH-0400-0002-GF
		.669	1.969	1.260	.551	1.331	.004	2175					
J	40	16.0	58.0	1	SL-QI-RJ16C40-58	40	14.0	39.8	0.1	150	3.0	0.11	QI-NJ-0500-0002-GF
		.630	2.283	1.575		.551	1.567	.004	2175				
	40	19.0	60.0	1	SL-QI-RJ19C40-60	40	14.0	39.8	0.1	150	3.0	0.11	QI-NJ-0500-0002-GF
		.748	2.362	1.575	.551	1.567	.004	2175					

SSC = To correspond with SSC on insert.

R = Right hand, L = Left hand

CoroCut® QI head for grooving

Screw clamp design



SSC	CZC _{MS}	CDX	DMIN ₁	CNCS	Ordering code	Dimensions, mm, inch							MIID
						DCON _{MS}	LF	WF	HF	BAR PSI	NM	KG	
E	16	6.0	24.0	1	SL-QI-LE06C16-24	16	14.0	19.3	0.1	150	1.5	0.01	QI-NE-0200-0002-GF
		.236	.945			.630	.551	.760	.004	2175			
F	20	8.0	30.0	1	SL-QI-LF08C20-30	20	14.0	19.3	0.1	150	1.7	0.02	QI-NF-0246-0002-GF
		.315	1.181			.787	.551	.760	.004	2175			
G	20	6.0	28.0	1	SL-QI-LG06C20-28	20	14.0	19.3	0.1	150	1.7	0.02	QI-NG-0300-0002-GF
		.236	1.102			.787	.551	.760	.004	2175			
	25	11.0	37.0	1	SL-QI-LG11C25-37	25	14.0	27.3	0.1	150	3.0	0.03	QI-NG-0300-0002-GF
		.433	1.457			.984	.551	1.075	.004	2175			
	25	14.0	40.0	1	SL-QI-LG14C25-40	25	14.0	27.3	0.1	150	3.0	0.07	QI-NG-0300-0002-GF
		.551	1.575			.984	.551	1.075	.004	2175			
H	32	14.0	48.0	1	SL-QI-LH14C32-48	32	14.0	33.8	0.1	150	3.0	0.06	QI-NH-0400-0002-GF
		.551	1.890			1.260	.551	1.331	.004	2175			
	32	17.0	50.0	1	SL-QI-LH17C32-50	32	14.0	33.8	0.1	150	3.0	0.10	QI-NH-0400-0002-GF
		.669	1.969			1.260	.551	1.331	.004	2175			
J	40	16.0	58.0	1	SL-QI-LJ16C40-58	40	14.0	39.8	0.1	150	3.0	0.15	QI-NJ-0500-0002-GF
		.630	2.283			1.575	.551	1.567	.004	2175			
	40	19.0	60.0	1	SL-QI-LJ19C40-60	40	14.0	39.8	0.1	150	3.0	0.11	QI-NJ-0500-0002-GF
		.748	2.362			1.575	.551	1.567	.004	2175			

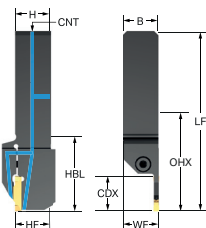
SSC = To correspond with SSC on insert.

R = Right hand, L = Left hand

CoroCut® 2 QS shank tool for parting and grooving

Screw clamp design

Precision coolant supply



Metric version

SSC	CZC _{MS}	CDX ₁	OHX	OHN	CNCS	Ordering code	Dimensions, mm						BAR	NM	KG	MIID
							B	H	LF ₁	WF ₁	CNT					
H	20 x 20	20.0	57.6	40.1	3	C2R-QS20-R/LH20CB	20.0	20.0	109.1	20.5	G 1/8-28	150	4.5	0.28	C2I-H2N-0400-	
	25 x 25	20.0	65.6	40.1	3	C2R-QS25-R/LH20CB	25.0	25.0	124.1	25.5	G 1/8-28	150	4.5	0.49	C2I-H2N-0400-	
	25 x 25	25.0	70.6	45.1	3	C2R-QS25-R/LH25CB	25.0	25.0	129.1	25.5	G 1/8-28	150	5.5	0.50	C2I-H2N-0400-	
J	20 x 20	20.0	57.6	40.1	3	C2R-QS20-R/LJ20CB	20.0	20.0	109.1	20.5	G 1/8-28	150	4.5	0.28	C2I-J2N-0500-	
	25 x 25	25.0	70.6	45.1	3	C2R-QS25-R/LJ25CB	25.0	25.0	129.1	25.5	G 1/8-28	150	5.5	0.50	C2I-J2N-0500-	
K	25 x 25	25.0	70.6	45.1	3	C2R-QS25-R/LK25CB	25.0	25.0	129.1	25.5	G 1/8-28	150	5.5	0.51	C2I-K2N-0600-	
L	25 x 25	32.0	79.2	53.7	3	C2R-QS25-R/LL32CB	25.0	25.0	137.7	26.5	G 1/8-28	150	6.5	0.54	C2I-L2N-0800-	

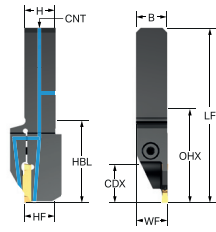
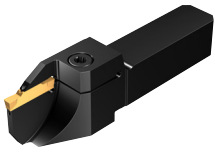
SSC = To correspond with SSC on insert.

R = Right hand, L = Left hand

CoroCut® 2 QS shank tool for parting and grooving

Screw clamp design

Precision coolant supply



Metric version

		Dimensions, mm														
SSC	CZC _{MS}	CDX ₁	OHX	OHN	CNSC	Ordering code	B	H	LF ₁	WF ₁	CUTDIA	CNT	BAR	NM	KG	MIID
H	20 x 20	25.0	62.6	45.1	3	C2R-QS20-R/LH25CD	20.0	20.0	114.1	20.5	50	G 1/8-28	150	5.5	0.29	C2I-H2N-0400-

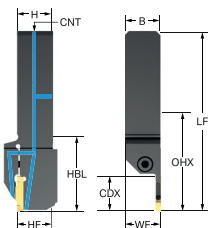
SSC = To correspond with SSC on insert.

R = Right hand, L = Left hand

CoroCut® 2 QS shank tool for parting and grooving

Screw clamp design

Precision coolant supply



Inch version

SSC	CZC _{MS}	CDX ₁	OHX	OHN	CNSC	Ordering code	Dimensions, inch							PSI	FT/ LBS	LBS	MIID
							B	H	LF	WF	HF	CNT					
H	3/4 x 3/4	.800	2.281	1.592	3	C2R-QSA12-R/LH20CB	.750	.750	4.308	.770	.750	G 1/8-28	2175	3.3	.549	C2I-H2N-0400-	
	1 x 1	1.000	2.796	1.792	3	C2R-QSA16-R/LH25CB	1.000	1.000	5.099	1.020	1.000	G 1/8-28	2175	4.1	1.133	C2I-H2N-0400-	
J	3/4 x 3/4	.800	2.281	1.592	3	C2R-QSA12-R/LJ20CB	.750	.750	4.308	.770	.750	G 1/8-28	2175	3.3	.558	C2I-J2N-0500-	
	1 x 1	1.000	2.796	1.792	3	C2R-QSA16-R/LJ25CB	1.000	1.000	5.099	1.020	1.000	G 1/8-28	2175	4.1	1.146	C2I-J2N-0500-	
K	1 x 1	1.000	2.796	1.792	3	C2R-QSA16-R/LK25CB	1.000	1.000	5.099	1.020	1.000	G 1/8-28	2175	4.1	1.164	C2I-K2N-0600-	
L	1 x 1	1.250	3.110	2.106	3	C2R-QSA16-R/LL32CB	1.000	1.000	5.413	1.059	1.000	G 1/8-28	2175	4.8	1.219	C2I-L2N-0800-	

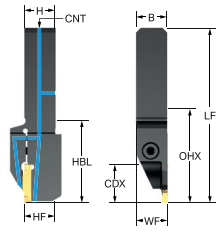
SSC = To correspond with SSC on insert.

R = Right hand, L = Left hand

CoroCut® 2 QS shank tool for parting and grooving

Screw clamp design

Precision coolant supply



Inch version

		Dimensions, inch															
SSC	CZC _{MS}	CDX ₁	OHX	OHN	CNSC	Ordering code	B	H	LF	WF	HF	CUTDIA	CNT	PSI	FT/LBS	LBS	MIID
H	3/4 x 3/4	1.000	2.481	1.792	3	C2R-QSA12-R/LH25CD	.750	.750	4.508	.770	.750	2.000	G 1/8-28	2175	4.1	.582	C2I-H2N-0400-

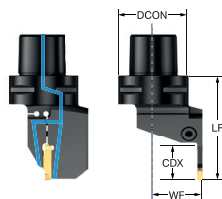
SSC = To correspond with SSC on insert.

R = Right hand, L = Left hand

CoroCut® 2 cutting unit for parting and grooving

Screw clamp design

Coromant Capto® - Precision coolant supply



				Dimensions, mm, inch								
SSC	CZC _{MS}	CDX	CNSC	Ordering code	DCON _{MS}	LF	WF	OAH	BAR PSI	NM	KG	MIID
H	C3	13.0	3	C2R-CC3-R/LH13CB	32	55.0	22.0	41.0	150	4.5	0.29	C2I-H2N-0400-
					1.260	2.165	.866	1.614	2175			
	C3	20.0	3	C2R-CC3-R/LH20CB	32	65.0	22.0	41.0	150	4.5	0.32	C2I-H2N-0400-
					1.260	2.559	.866	1.614	2175			
	C4	13.0	3	C2R-CC4-R/LH13CB	40	60.0	27.0	45.0	150	4.5	0.46	C2I-H2N-0400-
					1.575	2.362	1.063	1.771	2175			
	C4	20.0	3	C2R-CC4-R/LH20CB	40	70.0	27.0	45.0	150	4.5	0.50	C2I-H2N-0400-
					1.575	2.756	1.063	1.771	2175			
	C4	25.0	3	C2R-CC4-R/LH25CB	40	75.0	27.0	45.0	150	5.5	0.48	C2I-H2N-0400-
					1.575	2.953	1.063	1.771	2175			
	C5	13.0	3	C2R-CC5-R/LH13CB	50	60.0	35.0	57.0	150	4.5	0.73	C2I-H2N-0400-
					1.969	2.362	1.378	2.244	2175			
	C5	25.0	3	C2R-CC5-R/LH25CB	50	75.0	35.0	57.0	150	5.5	0.76	C2I-H2N-0400-
					1.969	2.953	1.378	2.244	2175			
	C6	13.0	3	C2R-CC6-R/LH13CB	63	65.0	45.0	64.5	150	4.5	1.21	C2I-H2N-0400-
					2.480	2.559	1.772	2.539	2175			
	C6	20.0	3	C2R-CC6-R/LH20CB	63	70.0	45.0	64.5	150	4.5	1.17	C2I-H2N-0400-
					2.480	2.756	1.772	2.539	2175			
C6	25.0	3	C2R-CC6-R/LH25CB	63	75.0	45.0	64.5	150	5.5	1.16	C2I-H2N-0400-	
				2.480	2.953	1.772	2.539	2175				
C8	25.0	3	C2R-CC8-R/LH25CB	80	85.0	51.0	81.0	150	5.5	2.36	C2I-H2N-0400-	
				3.150	3.346	2.008	3.188	2175				
J	C4	13.0	3	C2R-CC4-R/LJ13CB	40	60.0	27.0	45.0	150	4.5	0.46	C2I-J2N-0500-
					1.575	2.362	1.063	1.771	2175			
	C4	20.0	3	C2R-CC4-R/LJ20CB	40	70.0	27.0	45.0	150	4.5	0.50	C2I-J2N-0500-
					1.575	2.756	1.063	1.771	2175			
	C4	25.0	3	C2R-CC4-R/LJ25CB	40	75.0	27.0	45.0	150	5.5	0.49	C2I-J2N-0500-
					1.575	2.953	1.063	1.771	2175			
	C5	13.0	3	C2R-CC5-R/LJ13CB	50	60.0	35.0	57.0	150	4.5	0.73	C2I-J2N-0500-
					1.969	2.362	1.378	2.244	2175			
	C5	25.0	3	C2R-CC5-R/LJ25CB	50	75.0	35.0	57.0	150	5.5	0.77	C2I-J2N-0500-
					1.969	2.953	1.378	2.244	2175			
	C6	13.0	3	C2R-CC6-R/LJ13CB	63	65.0	45.0	64.5	150	4.5	1.21	C2I-J2N-0500-
					2.480	2.559	1.772	2.539	2175			
	C6	25.0	3	C2R-CC6-R/LJ25CB	63	75.0	45.0	64.5	150	5.5	1.17	C2I-J2N-0500-
					2.480	2.953	1.772	2.539	2175			
	C8	13.0	3	C2R-CC8-R/LJ13CB	80	70.0	42.0	81.0	150	4.5	2.24	C2I-J2N-0500-
					3.150	2.756	1.654	3.188	2175			
	C8	25.0	3	C2R-CC8-R/LJ25CB	80	85.0	51.0	81.0	150	5.5	2.37	C2I-J2N-0500-
					3.150	3.346	2.008	3.188	2175			

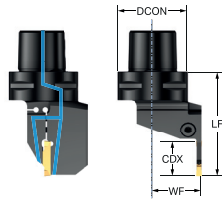
SSC = To correspond with SSC on insert.

R = Right hand, L = Left hand

CoroCut® 2 cutting unit for parting and grooving

Screw clamp design

Coromant Capto® - Precision coolant supply



SSC	CZC _{MS}	CDX	CNSC	Ordering code	Dimensions, mm, inch							MIID
					DCON _{MS}	LF	WF	OAH	BAR PSI	NM	KG	
K	C4	15.0	3	C2R-CC4-R/LK15CB	40	65.0	27.0	45.0	150	4.5	0.50	C2I-K2N-0600-
				<i>.591</i>	<i>1.575</i>	<i>2.559</i>	<i>1.063</i>	<i>1.771</i>	<i>2175</i>			
	C4	20.0	3	C2R-CC4-R/LK20CB	40	70.0	27.0	45.0	150	4.5	0.51	C2I-K2N-0600-
				<i>.787</i>	<i>1.575</i>	<i>2.756</i>	<i>1.063</i>	<i>1.771</i>	<i>2175</i>			
	C4	25.0	3	C2R-CC4-R/LK25CB	40	75.0	27.0	45.0	150	5.5	0.49	C2I-K2N-0600-
				<i>.984</i>	<i>1.575</i>	<i>2.953</i>	<i>1.063</i>	<i>1.771</i>	<i>2175</i>			
	C5	15.0	3	C2R-CC5-R/LK15CB	50	65.0	35.0	57.0	150	4.5	0.78	C2I-K2N-0600-
				<i>.591</i>	<i>1.969</i>	<i>2.559</i>	<i>1.378</i>	<i>2.244</i>	<i>2175</i>			
	C5	25.0	3	C2R-CC5-R/LK25CB	50	75.0	35.0	57.0	150	5.5	0.78	C2I-K2N-0600-
				<i>.984</i>	<i>1.969</i>	<i>2.953</i>	<i>1.378</i>	<i>2.244</i>	<i>2175</i>			
	C6	15.0	3	C2R-CC6-R/LK15CB	63	65.0	45.0	64.5	150	4.5	1.18	C2I-K2N-0600-
				<i>.591</i>	<i>2.480</i>	<i>2.559</i>	<i>1.772</i>	<i>2.539</i>	<i>2175</i>			
C6	25.0	3	C2R-CC6-R/LK25CB	63	75.0	45.0	64.5	150	5.5	1.17	C2I-K2N-0600-	
			<i>.984</i>	<i>2.480</i>	<i>2.953</i>	<i>1.772</i>	<i>2.539</i>	<i>2175</i>				
C8	16.0	3	C2R-CC8-R/LK16CB	80	75.0	42.0	81.0	150	4.5	2.31	C2I-K2N-0600-	
			<i>.630</i>	<i>3.150</i>	<i>2.953</i>	<i>1.654</i>	<i>3.188</i>	<i>2175</i>				
C8	25.0	3	C2R-CC8-R/LK25CB	80	85.0	51.0	81.0	150	5.5	2.38	C2I-K2N-0600-	
			<i>.984</i>	<i>3.150</i>	<i>3.346</i>	<i>2.008</i>	<i>3.188</i>	<i>2175</i>				
L	C5	13.0	3	C2R-CC5-R/LL13CB	50	65.0	35.0	59.0	150	6.5	0.81	C2I-L2N-0800-
				<i>.512</i>	<i>1.969</i>	<i>2.559</i>	<i>1.378</i>	<i>2.322</i>	<i>2175</i>			
	C5	25.0	3	C2R-CC5-R/LL25CB	50	75.0	35.0	59.0	150	6.5	0.80	C2I-L2N-0800-
				<i>.984</i>	<i>1.969</i>	<i>2.953</i>	<i>1.378</i>	<i>2.322</i>	<i>2175</i>			
	C6	15.0	3	C2R-CC6-R/LL15CB	63	70.0	45.0	66.5	150	6.5	1.28	C2I-L2N-0800-
				<i>.591</i>	<i>2.480</i>	<i>2.756</i>	<i>1.772</i>	<i>2.618</i>	<i>2175</i>			
	C6	25.0	3	C2R-CC6-R/LL25CB	63	80.0	45.0	66.5	150	6.5	1.30	C2I-L2N-0800-
				<i>.984</i>	<i>2.480</i>	<i>3.150</i>	<i>1.772</i>	<i>2.618</i>	<i>2175</i>			
	C6	30.0	3	C2R-CC6-R/LL30CB	63	85.0	45.0	66.5	150	6.5	1.28	C2I-L2N-0800-
				<i>1.181</i>	<i>2.480</i>	<i>3.346</i>	<i>1.772</i>	<i>2.618</i>	<i>2175</i>			
	C8	25.0	3	C2R-CC8-R/LL25CB	80	85.0	42.0	81.0	150	6.5	2.33	C2I-L2N-0800-
				<i>.984</i>	<i>3.150</i>	<i>3.346</i>	<i>1.654</i>	<i>3.188</i>	<i>2175</i>			
C8	32.0	3	C2R-CC8-R/LL32CB	80	90.0	51.0	81.0	150	6.5	2.32	C2I-L2N-0800-	
			<i>1.260</i>	<i>3.150</i>	<i>3.543</i>	<i>2.008</i>	<i>3.188</i>	<i>2175</i>				

SSC = To correspond with SSC on insert.

R = Right hand, L = Left hand

Milling

CoroMill® MH20

Inserts 38

CoroMill® MF80

Inserts 40
Face milling cutter 39-

CoroMill® Dura

Solid carbide end mills 41-57

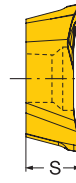
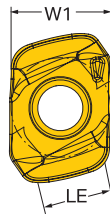
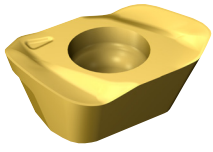
CoroMill® 316

Solid carbide head 58

For complete assortment, see www.sandvik.coromant.com

CoroMill® MH20 insert for milling

KRINS 15°



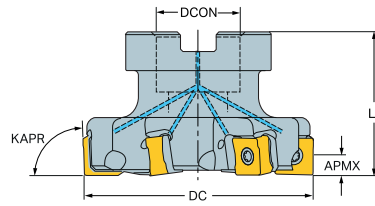
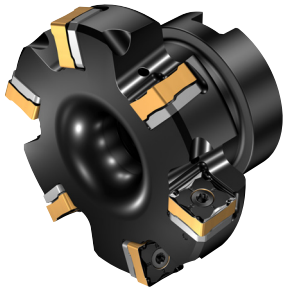
				M				S		Dimensions, mm, inch				
Medium	L50	SSC	REEQ	Ordering code						W1	LE	S		
		06	2.0	MH20-060320E-L50	1040	2040	S30T	S40T	2040				S30T	S40T
		.079			★	☆	☆	☆	☆	★	☆	6.4	4.5	3.42
		08	2.5	MH20-080425E-L50	★	☆	☆	☆	☆	★	☆	.252	.177	.135
		.098										8.5	5.9	4.03
												.335	.232	.159

CoroMill® MF80 face milling cutter

Arbor - Internal coolant supply

STDNO
KAPR

ISO6462
89°



Metric version

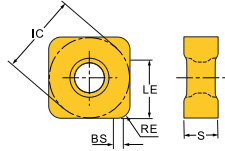
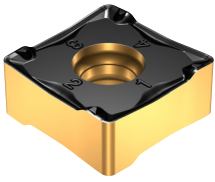
							Dimensions, mm								
DC	SSC	CZC _{MS}	APMX	CNSC		Ordering code	DCON _{MS}	ISO	DCX	LF		RPMX	CICT	MIID	
63.0	13	22	9.0	1	5	MF80-R063Q22-13M	22.0	A	63.4	40.0	3.0	0.40	11800	5	1305
80.0	13	27	9.0	1	6	MF80-R080Q27-13M	27.0	A	80.4	50.0	3.0	0.74	10400	6	1305
	13	27	9.0	1	8	MF80-R080Q27-13H	27.0	A	80.4	50.0	3.0	0.71	10400	8	1305
100.0	13	32	9.0	1	8	MF80-R100Q32-13M	32.0	B	100.4	50.0	3.0	1.00	9300	8	1305
	13	32	9.0	1	10	MF80-R100Q32-13H	32.0	B	100.4	50.0	3.0	0.97	9300	10	1305
125.0	13	40	9.0	1	10	MF80-R125Q40-13M	40.0	B	125.4	63.0	3.0	1.85	8300	10	1305
	13	40	9.0	1	12	MF80-R125Q40-13H	40.0	B	125.4	63.0	3.0	1.61	8300	12	1305

Inch version

							Dimensions, inch								
DC	SSC	CZC _{MS}	APMX	CNSC		Ordering code	DCON _{MS}	ISO	DCX	LF		RPMX	CICT	MIID	
2.500	13	1	.354	1	5	MF80-AR063R25-13M	1.000	A	2.516	1.575	2.2	0.97	11700	5	1305
3.000	13	1	.354	1	6	MF80-AR076R25-13M	1.000	A	3.016	1.969	2.2	1.53	10700	6	1305
	13	1	.354	1	8	MF80-AR076R25-13H	1.000	A	3.016	1.969	2.2	1.65	10700	8	1305
4.000	13	1 1/2	.354	1	8	MF80-AR102R38-13M	1.500	B	4.016	1.969	2.2	2.32	9200	8	1305
	13	1 1/2	.354	1	10	MF80-AR102R38-13H	1.500	B	4.016	1.969	2.2	2.24	9200	10	1305
5.000	13	1 1/2	.354	1	10	MF80-AR127R38-13M	1.500	B	5.016	2.480	2.2	3.65	8300	10	1305
	13	1 1/2	.354	1	12	MF80-AR127R38-13H	1.500	B	5.016	2.480	2.2	3.65	8300	12	1305

CoroMill® MF80 insert for milling

KRINS 89°



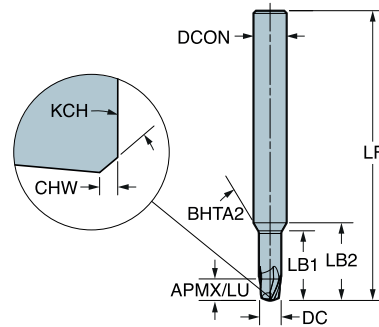
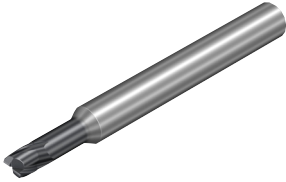
				P				K				Dimensions, mm, inch						
		SSC	RE	Ordering code				IC	LE	S	BS							
Medium	M50	13	0.80	MF80-130508M-M50	☆	★	☆	★	☆	☆	13.0	9.0	5.00	1.6				
			.031									.512	.354	.197	.063			

CoroMill® Dura solid carbide end mill for general machining

For multi-materials

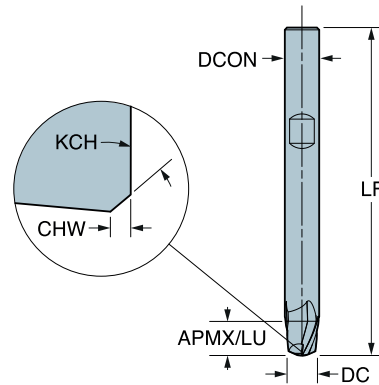
1K212 - 1xD

FHA 28°
 BSG COROMANT
 TCDC e8
 TCDCON h6
 ZEFP 2



Metric version

DC	CZC _{MS}	APMX	CHW	KCH	LU	ZEFP	FHA	Ordering code	Dimensions, mm								
									P	M	K	N	S	DCON _{MS}	LF	LB ₁	LB ₂
2.0	6	2.0			2.0	2	28°	1K212-0200-XA	1730	1730	1730	1730	6.0	50.0	8.5	12.0	30°
3.0	6	3.0	0.08	45°	3.0	2	28°	1K212-0300-XA	1730	1730	1730	1730	6.0	50.0	10.0	12.6	30°
3.8	6	3.8	0.08	45°	3.8	2	28°	1K212-0380-XA	1730	1730	1730	1730	6.0	54.0	12.7	14.6	30°
4.0	6	4.0	0.13	45°	4.0	2	28°	1K212-0400-XA	1730	1730	1730	1730	6.0	54.0	12.5	14.2	30°
4.8	6	4.8	0.13	45°	4.8	2	28°	1K212-0480-XA	1730	1730	1730	1730	6.0	54.0	15.0	16.0	30°
5.0	6	5.0	0.13	45°	5.0	2	28°	1K212-0500-XA	1730	1730	1730	1730	6.0	54.0	14.0	14.9	30°
5.8	6	5.8	0.13	45°	5.8	2	28°	1K212-0580-XA	1730	1730	1730	1730	6.0	57.0	16.3	16.5	30°



Metric version

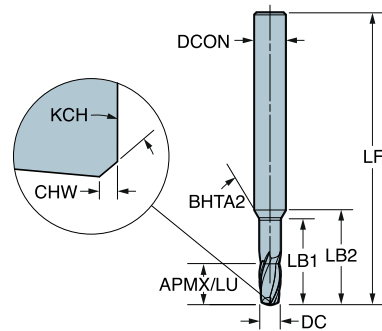
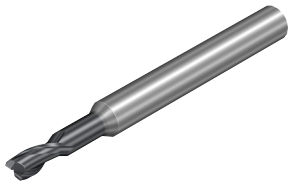
DC	CZC _{MS}	APMX	CHW	KCH	LU	ZEFP	FHA	Ordering code	Dimensions, mm						
									P	M	K	N	S	DCON _{MS}	LF
6.0	6	6.0	0.13	45°	6.0	2	28°	1K212-0600-XB	1730	1730	1730	1730	6.0	57.0	
7.8	8	7.8	0.13	45°	7.8	2	28°	1K212-0780-XB	1730	1730	1730	1730	8.0	63.0	21.1
8.0	8	8.0	0.20	45°	8.0	2	28°	1K212-0800-XB	1730	1730	1730	1730	8.0	63.0	
9.7	10	9.7	0.20	45°	9.7	2	28°	1K212-0970-XB	1730	1730	1730	1730	10.0	72.0	26.2
10.0	10	10.0	0.20	45°	10.0	2	28°	1K212-1000-XB	1730	1730	1730	1730	10.0	72.0	
11.7	12	11.7	0.20	45°	11.7	2	28°	1K212-1170-XB	1730	1730	1730	1730	12.0	83.0	30.5
12.0	12	12.0	0.20	45°	12.0	2	28°	1K212-1200-XB	1730	1730	1730	1730	12.0	83.0	
16.0	16	16.0	0.20	45°	16.0	2	28°	1K212-1600-XB	1730	1730	1730	1730	16.0	92.0	
20.0	20	20.0	0.30	45°	20.0	2	28°	1K212-2000-XB	1730	1730	1730	1730	20.0	92.0	

CoroMill® Dura solid carbide end mill for general machining

For multi-materials

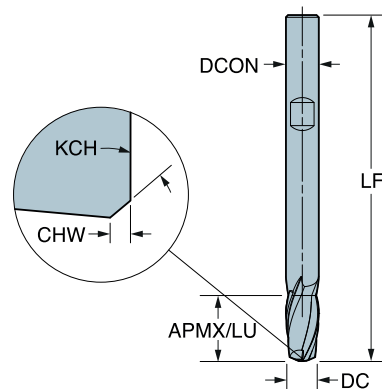
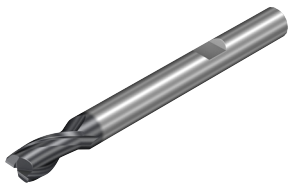
1K232 - 2xD

FHA 28°
 BSG COROMANT
 TCDC e8
 TCDCON h6
 ZEFP 2



Metric version

DC	CZC _{MS}	APMX	CHW	KCH	LU	ZEFP	FHA	Ordering code	Dimensions, mm									
									P	M	K	N	S	DCON _{MS}	LF	LB ₁	LB ₂	BHTA ₂
1.0	6	2.0			2.0	2	28°	1K232-0100-XA	★	★	★	★	★	6.0	50.0	8.0	12.3	30°
2.0	6	4.0			4.0	2	28°	1K232-0200-XA	★	★	★	★	★	6.0	57.0	10.5	14.0	30°
3.0	6	6.0	0.08	45°	6.0	2	28°	1K232-0300-XA	★	★	★	★	★	6.0	57.0	13.0	15.6	30°
4.0	6	8.0	0.13	45°	8.0	2	28°	1K232-0400-XA	★	★	★	★	★	6.0	57.0	16.5	18.2	30°
5.0	6	10.0	0.13	45°	10.0	2	28°	1K232-0500-XA	★	★	★	★	★	6.0	57.0	19.0	19.9	30°



Metric version

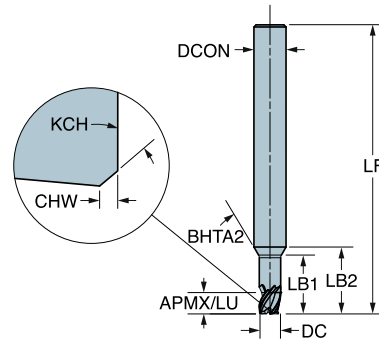
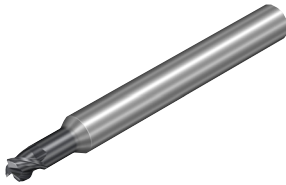
DC	CZC _{MS}	APMX	CHW	KCH	LU	ZEFP	FHA	Ordering code	Dimensions, mm						
									P	M	K	N	S	DCON _{MS}	LF
6.0	6	12.0	0.13	45°	12.0	2	28°	1K232-0600-XB	★	★	★	★	★	6.0	63.0
8.0	8	16.0	0.20	45°	16.0	2	28°	1K232-0800-XB	★	★	★	★	★	8.0	72.0
10.0	10	20.0	0.20	45°	20.0	2	28°	1K232-1000-XB	★	★	★	★	★	10.0	82.0
12.0	12	24.0	0.20	45°	24.0	2	28°	1K232-1200-XB	★	★	★	★	★	12.0	92.0
16.0	16	32.0	0.20	45°	32.0	2	28°	1K232-1600-XB	★	★	★	★	★	16.0	104.0
20.0	20	40.0	0.30	45°	40.0	2	28°	1K232-2000-XB	★	★	★	★	★	20.0	114.0

CoroMill® Dura solid carbide end mill for general machining

For multi-materials

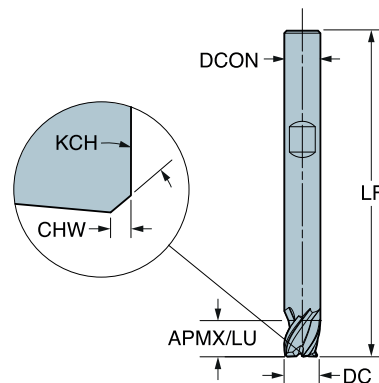
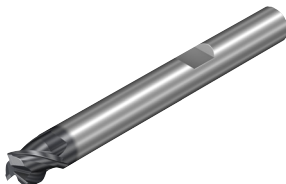
1K313 – 1xD

FHA 38°
 BSG COROMANT
 TCDC d8
 TCDCON h6
 ZEFP 3



Metric version

DC	CZC _{MS}	APMX	CHW	KCH	LU	ZEFP	FHA	Ordering code	Dimensions, mm									
									P	M	K	N	S	DCON _{MS}	LF	LB ₁	LB ₂	BHTA ₂
2.0	6	2.0			2.0	3	38°	1K313-0200-XA	★	★	★	★	★	6.0	50.0	6.0	9.5	30°
3.0	6	3.0	0.08	45°	3.0	3	38°	1K313-0300-XA	★	★	★	★	★	6.0	50.0	8.5	11.1	30°
3.5	6	3.5	0.08	45°	3.5	3	38°	1K313-0350-XA	★	★	★	★	★	6.0	50.0	9.9	12.1	30°
3.8	6	3.8	0.08	45°	3.8	3	38°	1K313-0380-XA	★	★	★	★	★	6.0	54.0	10.8	12.7	30°
4.0	6	4.0	0.13	45°	4.0	3	38°	1K313-0400-XA	★	★	★	★	★	6.0	54.0	10.5	12.2	30°
4.5	6	4.5	0.13	45°	4.5	3	38°	1K313-0450-XA	★	★	★	★	★	6.0	54.0	11.8	13.1	30°
4.8	6	4.8	0.13	45°	4.8	3	38°	1K313-0480-XA	★	★	★	★	★	6.0	54.0	12.6	13.6	30°
5.0	6	5.0	0.13	45°	5.0	3	38°	1K313-0500-XA	★	★	★	★	★	6.0	54.0	12.0	12.9	30°
5.8	6	5.8	0.13	45°	5.8	3	38°	1K313-0580-XA	★	★	★	★	★	6.0	54.0	13.9	14.1	30°



Metric version

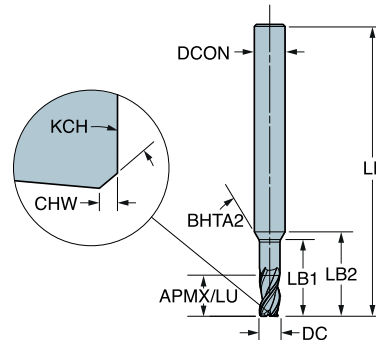
DC	CZC _{MS}	APMX	CHW	KCH	LU	ZEFP	FHA	Ordering code	Dimensions, mm							
									P	M	K	N	S	DCON _{MS}	LF	LB ₁
6.0	6	6.0	0.13	45°	6.0	3	38°	1K313-0600-XB	★	★	★	★	★	6.0	54.0	
7.8	8	7.8	0.13	45°	7.8	3	38°	1K313-0780-XB	★	★	★	★	★	8.0	58.0	17.9
8.0	8	8.0	0.20	45°	8.0	3	38°	1K313-0800-XB	★	★	★	★	★	8.0	58.0	
9.7	10	9.7	0.20	45°	9.7	3	38°	1K313-0970-XB	★	★	★	★	★	10.0	66.0	22.3
10.0	10	10.0	0.20	45°	10.0	3	38°	1K313-1000-XB	★	★	★	★	★	10.0	66.0	
11.7	12	11.7	0.20	45°	11.7	3	38°	1K313-1170-XB	★	★	★	★	★	12.0	73.0	25.7
12.0	12	12.0	0.20	45°	12.0	3	38°	1K313-1200-XB	★	★	★	★	★	12.0	73.0	
16.0	16	16.0	0.20	45°	16.0	3	38°	1K313-1600-XB	★	★	★	★	★	16.0	82.0	
20.0	20	20.0	0.30	45°	20.0	3	38°	1K313-2000-XB	★	★	★	★	★	20.0	92.0	

CoroMill® Dura solid carbide end mill for general machining

For multi-materials

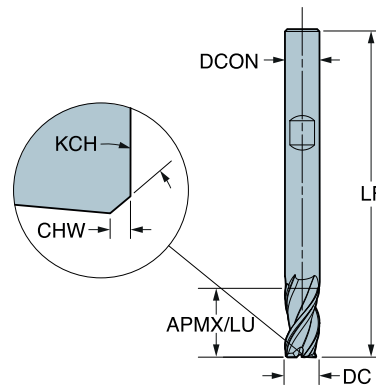
1K333 - 2xD

FHA 38°
 BSG COROMANT
 TCDC d8
 TCDCON h6
 ZEFP 3



Metric version

DC	CZC _{MS}	APMX	CHW	KCH	LU	ZEFP	FHA	Ordering code	Dimensions, mm								
									P	M	K	N	S	DCON _{MS}	LF	LB ₁	LB ₂
1.0	6	2.0			2.0	3	38°	1K333-0100-XA	1730	1730	1730	1730	6.0	50.0	9.0	13.3	30°
1.5	6	3.0			3.0	3	38°	1K333-0150-XA	1730	1730	1730	1730	6.0	50.0	8.0	11.9	30°
1.8	6	3.6			3.6	3	38°	1K333-0180-XA	1730	1730	1730	1730	6.0	50.0	8.0	11.6	30°
2.0	6	4.0			4.0	3	38°	1K333-0200-XA	1730	1730	1730	1730	6.0	50.0	8.0	11.5	30°
2.5	6	5.0	0.08	45°	5.0	3	38°	1K333-0250-XA	1730	1730	1730	1730	6.0	50.0	10.0	13.0	30°
2.8	6	5.6	0.08	45°	5.6	3	38°	1K333-0280-XA	1730	1730	1730	1730	6.0	57.0	11.2	11.5	30°
3.0	6	6.0	0.08	45°	6.0	3	38°	1K333-0300-XA	1730	1730	1730	1730	6.0	57.0	11.5	14.1	30°
3.5	6	7.0	0.08	45°	7.0	3	38°	1K333-0350-XA	1730	1730	1730	1730	6.0	57.0	13.4	15.6	30°
4.0	6	8.0	0.13	45°	8.0	3	38°	1K333-0400-XA	1730	1730	1730	1730	6.0	57.0	14.5	16.2	30°
4.5	6	9.0	0.13	45°	9.0	3	38°	1K333-0450-XA	1730	1730	1730	1730	6.0	57.0	16.3	17.6	30°
4.8	6	9.6	0.13	45°	9.6	3	38°	1K333-0480-XA	1730	1730	1730	1730	6.0	57.0	17.4	18.4	30°
5.0	6	10.0	0.13	45°	10.0	3	38°	1K333-0500-XA	1730	1730	1730	1730	6.0	57.0	17.0	17.9	30°
5.5	6	11.0	0.13	45°	11.0	3	38°	1K333-0550-XA	1730	1730	1730	1730	6.0	57.0	18.7	19.1	30°



Metric version

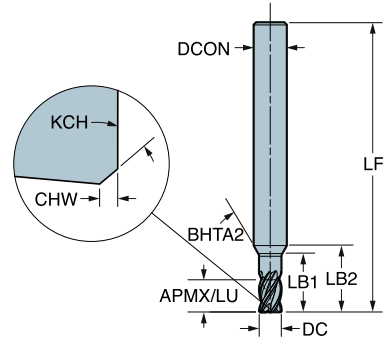
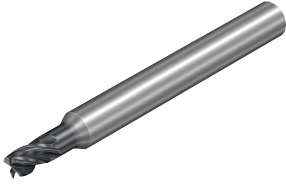
DC	CZC _{MS}	APMX	CHW	KCH	LU	ZEFP	FHA	Ordering code	Dimensions, mm						
									P	M	K	N	S	DCON _{MS}	LF
6.0	6	12.0	0.13	45°	12.0	3	38°	1K333-0600-XB	1730	1730	1730	1730	6.0	57.0	
6.5	8	13.0	0.13	45°	13.0	3	38°	1K333-0650-XB	1730	1730	1730	1730	8.0	63.0	21.5
8.0	8	16.0	0.20	45°	16.0	3	38°	1K333-0800-XB	1730	1730	1730	1730	8.0	63.0	
10.0	10	20.0	0.20	45°	20.0	3	38°	1K333-1000-XB	1730	1730	1730	1730	10.0	72.0	
12.0	12	24.0	0.20	45°	24.0	3	38°	1K333-1200-XB	1730	1730	1730	1730	12.0	83.0	
16.0	16	32.0	0.20	45°	32.0	3	38°	1K333-1600-XB	1730	1730	1730	1730	16.0	100.0	
20.0	20	40.0	0.30	45°	40.0	3	38°	1K333-2000-XB	1730	1730	1730	1730	20.0	114.0	

CoroMill® Dura solid carbide end mill for general machining

For multi-materials

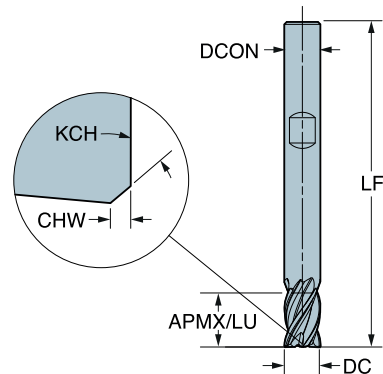
1K324 – 1.5xD

FHA 36°
 BSG COROMANT
 TCDC h10
 TCDCON h6
 ZEFP 4



Metric version

DC	CZC _{MS}	APMX	CHW	KCH	LU	ZEFP	FHA	Ordering code	P	M	K	N	S	Dimensions, mm				
														1730	1730	1730	1730	1730
2.0	6	3.0			3.0	4	36°	1K324-0200-XA	*	*	*	*	*	6.0	50.0	9.0	12.5	30°
3.0	6	4.5	0.08	45°	4.5	4	36°	1K324-0300-XA	*	*	*	*	*	6.0	50.0	8.0	10.6	30°
4.0	6	6.0	0.13	45°	6.0	4	35°	1K324-0400-XA	*	*	*	*	*	6.0	54.0	10.0	11.7	30°
5.0	6	7.5	0.13	45°	7.5	4	35°	1K324-0500-XA	*	*	*	*	*	6.0	54.0	13.0	13.9	30°



Metric version

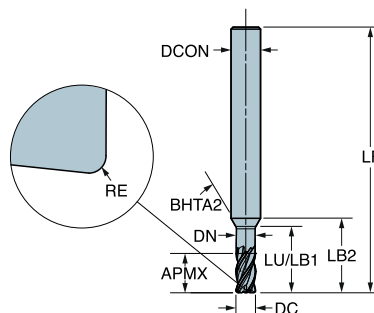
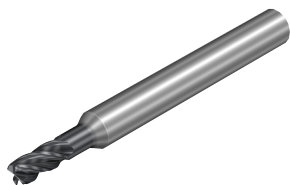
DC	CZC _{MS}	APMX	CHW	KCH	LU	ZEFP	FHA	Ordering code	P	M	K	N	S	Dimensions, mm	
														1730	1730
6.0	6	9.0	0.13	45°	9.0	4	35°	1K324-0600-XB	*	*	*	*	*	6.0	54.0
8.0	8	12.0	0.20	45°	12.0	4	35°	1K324-0800-XB	*	*	*	*	*	8.0	58.0
10.0	10	15.0	0.20	45°	15.0	4	35°	1K324-1000-XB	*	*	*	*	*	10.0	66.0
12.0	12	18.0	0.20	45°	18.0	4	35°	1K324-1200-XB	*	*	*	*	*	12.0	73.0
16.0	16	24.0	0.20	45°	24.0	4	35°	1K324-1600-XB	*	*	*	*	*	16.0	92.0
20.0	20	30.0	0.30	45°	30.0	4	35°	1K324-2000-XB	*	*	*	*	*	20.0	104.0

CoroMill® Dura solid carbide end mill for general machining

For multi-materials

1K334 - 2xD

FHA 36°
 BSG COROMANT
 TCDC h10
 TCDCON h6
 ZEFP 4



Metric version

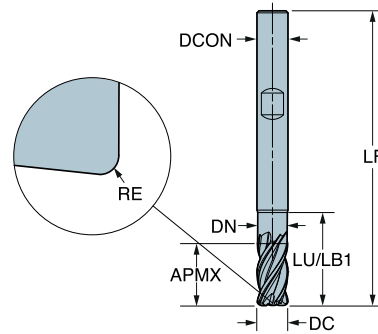
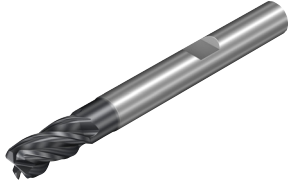
DC	CZC _{MS}	APMX	RE	LU	ZEFP	FHA	Ordering code	Dimensions, mm									
								P	M	K	N	S					
2.0	6	4.0	0.20	10.0	4	36°	1K334-0200-020-XC	1730	1730	1730	1730	DCON _{MS}	LF	DN	LB ₁	LB ₂	BHTA ₂
	6	4.0	0.50	10.0	4	36°	1K334-0200-050-XC	*	*	*	*	6.0	50.0	1.9	10.0	13.5	30°
3.0	6	6.0	0.20	10.0	4	36°	1K334-0300-020-XC	1730	1730	1730	1730	DCON _{MS}	LF	DN	LB ₁	LB ₂	BHTA ₂
	6	6.0	0.50	10.0	4	36°	1K334-0300-050-XC	*	*	*	*	6.0	50.0	2.9	10.0	12.7	30°
4.0	6	8.0	0.50	13.0	4	35°	1K334-0400-050-XC	1730	1730	1730	1730	DCON _{MS}	LF	DN	LB ₁	LB ₂	BHTA ₂
	6	8.0	1.00	13.0	4	35°	1K334-0400-100-XC	*	*	*	*	6.0	54.0	3.8	13.0	14.9	30°
5.0	6	10.0	0.50	16.0	4	35°	1K334-0500-050-XC	1730	1730	1730	1730	DCON _{MS}	LF	DN	LB ₁	LB ₂	BHTA ₂
	6	10.0	1.00	16.0	4	35°	1K334-0500-100-XC	*	*	*	*	6.0	54.0	4.8	16.0	17.0	30°

CoroMill® Dura solid carbide end mill for general machining

For multi-materials

1K334 – 2xD

FHA 35°
 BSG COROMANT
 TCDC h10
 TCDCON h6
 ZEFP 4



Metric version

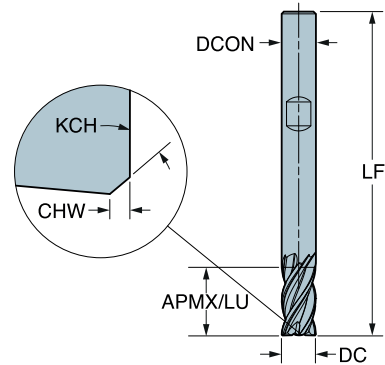
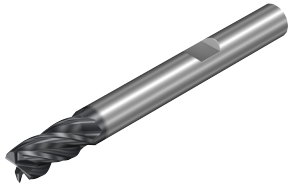
DC	CZC _{MS}	APMX	RE	LU	ZEFP	FHA	Ordering code	P M K N S				Dimensions, mm				
								1730	1730	1730	1730	DCON _{MS}	LF	DN	LB ₁	
6.0	6	13.0	0.50	19.0	4	35°	1K334-0600-050-XD	*	*	*	*	*	6.0	57.0	5.8	19.0
	6	13.0	1.00	19.0	4	35°	1K334-0600-100-XD	*	*	*	*	*	6.0	57.0	5.8	19.0
8.0	8	19.0	0.50	26.5	4	35°	1K334-0800-050-XD	*	*	*	*	*	8.0	63.0	7.7	26.5
	8	19.0	1.00	26.5	4	35°	1K334-0800-100-XD	*	*	*	*	*	8.0	63.0	7.7	26.5
10.0	10	22.0	0.50	31.0	4	35°	1K334-1000-050-XD	*	*	*	*	*	10.0	72.0	9.6	31.0
	10	22.0	1.00	31.0	4	35°	1K334-1000-100-XD	*	*	*	*	*	10.0	72.0	9.6	31.0
12.0	12	26.0	0.50	36.0	4	35°	1K334-1200-050-XD	*	*	*	*	*	12.0	83.0	11.5	36.0
	12	26.0	1.00	36.0	4	35°	1K334-1200-100-XD	*	*	*	*	*	12.0	83.0	11.5	36.0
16.0	16	32.0	0.50	48.0	4	35°	1K334-1600-050-XD	*	*	*	*	*	16.0	100.0	15.4	48.0
	16	32.0	1.00	48.0	4	35°	1K334-1600-100-XD	*	*	*	*	*	16.0	100.0	15.4	48.0
20.0	20	40.0	0.50	60.0	4	35°	1K334-2000-050-XD	*	*	*	*	*	20.0	114.0	19.2	60.0
	20	40.0	1.00	60.0	4	35°	1K334-2000-100-XD	*	*	*	*	*	20.0	114.0	19.2	60.0
	20	40.0	2.00	60.0	4	35°	1K334-2000-200-XD	*	*	*	*	*	20.0	114.0	19.2	60.0
	20	40.0	3.00	60.0	4	35°	1K334-2000-300-XD	*	*	*	*	*	20.0	114.0	19.2	60.0
	20	40.0	4.00	60.0	4	35°	1K334-2000-400-XD	*	*	*	*	*	20.0	114.0	19.2	60.0

CoroMill® Dura solid carbide end mill for general machining

For multi-materials

1K334 - 2xD

FHA 35°
 BSG COROMANT
 TCDC h10
 TCDCON h6
 ZEFP 4



Metric version

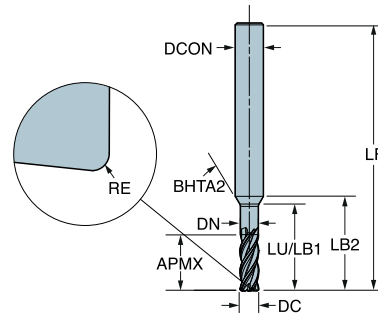
DC	CZC _{MS}	APMX	CHW	KCH	LU	ZEFP	FHA	Ordering code	P M K N S				Dimensions, mm		
									1730	1730	1730	1730	DCON _{MS}	LF	
6.0	6	13.0	0.13	45°	13.0	4	35°	1K334-0600-XB	*	*	*	*	*	6.0	57.0
8.0	8	19.0	0.20	45°	19.0	4	35°	1K334-0800-XB	*	*	*	*	*	8.0	63.0
10.0	10	22.0	0.20	45°	22.0	4	35°	1K334-1000-XB	*	*	*	*	*	10.0	72.0
12.0	12	26.0	0.20	45°	26.0	4	35°	1K334-1200-XB	*	*	*	*	*	12.0	83.0
16.0	16	32.0	0.20	45°	32.0	4	35°	1K334-1600-XB	*	*	*	*	*	16.0	100.0
20.0	20	40.0	0.30	45°	40.0	4	35°	1K334-2000-XB	*	*	*	*	*	20.0	114.0

CoroMill® Dura solid carbide end mill for general machining

For multi-materials

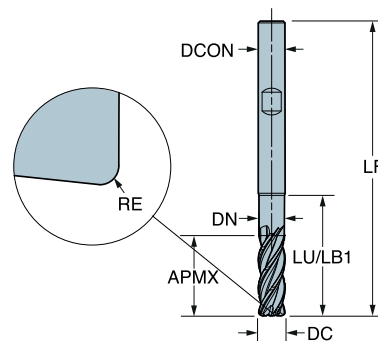
1K354 – 3xD

FHA 36°
 BSG COROMANT
 TCDC h10
 TCDCON h6
 ZEFP 4



Metric version

DC	CZC _{MS}	APMX	RE	LU	ZEFP	FHA	Ordering code	Dimensions, mm									
								P	M	K	N	S					
2.0	6	6.0	0.20	12.0	4	36°	1K354-0200-020-XC	1730	1730	1730	1730	DCON _{MS}	LF	DN	LB ₁	LB ₂	BHTA ₂
	6	6.0	0.50	12.0	4	36°	1K354-0200-050-XC	*	*	*	*	6.0	57.0	1.9	12.0	15.5	30°
3.0	6	9.0	0.20	13.5	4	36°	1K354-0300-020-XC	1730	1730	1730	1730	6.0	57.0	2.9	13.5	16.2	30°
	6	9.0	0.50	13.5	4	36°	1K354-0300-050-XC	*	*	*	*	6.0	57.0	2.9	13.5	16.2	30°
3.5	6	9.0	0.20	15.8	4	35°	1K354-0350-020-XC	1730	1730	1730	1730	6.0	57.0	3.4	15.8	18.0	30°
4.0	6	12.0	0.20	18.0	4	35°	1K354-0400-020-XC	1730	1730	1730	1730	6.0	57.0	3.8	18.0	19.9	30°
	6	12.0	0.50	18.0	4	35°	1K354-0400-050-XC	*	*	*	*	6.0	57.0	3.8	18.0	19.9	30°
5.0	6	15.0	0.50	22.5	4	35°	1K354-0500-050-XC	1730	1730	1730	1730	6.0	66.0	4.8	22.5	23.5	30°
	6	15.0	1.00	22.5	4	35°	1K354-0500-100-XC	*	*	*	*	6.0	66.0	4.8	22.5	23.5	30°



Metric version

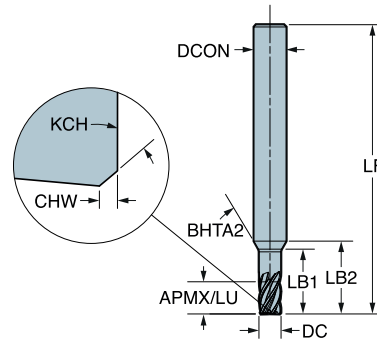
DC	CZC _{MS}	APMX	RE	LU	ZEFP	FHA	Ordering code	Dimensions, mm							
								P	M	K	N	S			
6.0	6	18.0	0.50	27.0	4	35°	1K354-0600-050-XD	1730	1730	1730	1730	DCON _{MS}	LF	DN	LB ₁
	6	18.0	1.00	27.0	4	35°	1K354-0600-100-XD	*	*	*	*	6.0	66.0	5.8	27.0
8.0	8	24.0	0.50	36.0	4	35°	1K354-0800-050-XD	1730	1730	1730	1730	8.0	73.0	7.7	36.0
	8	24.0	1.00	36.0	4	35°	1K354-0800-100-XD	*	*	*	*	8.0	73.0	7.7	36.0
10.0	8	24.0	2.00	36.0	4	35°	1K354-0800-200-XD	*	*	*	*	8.0	73.0	7.7	36.0
	10	30.0	0.50	45.0	4	35°	1K354-1000-050-XD	1730	1730	1730	1730	10.0	87.0	9.6	45.0
12.0	10	30.0	1.00	45.0	4	35°	1K354-1000-100-XD	*	*	*	*	10.0	87.0	9.6	45.0
	10	30.0	2.00	45.0	4	35°	1K354-1000-200-XD	*	*	*	*	10.0	87.0	9.6	45.0
16.0	12	36.0	1.00	54.0	4	35°	1K354-1200-100-XD	1730	1730	1730	1730	12.0	104.0	11.5	54.0
	12	36.0	2.00	54.0	4	35°	1K354-1200-200-XD	*	*	*	*	12.0	104.0	11.5	54.0
20.0	12	36.0	3.00	54.0	4	35°	1K354-1200-300-XD	*	*	*	*	12.0	104.0	11.5	54.0
	16	48.0	1.00	72.0	4	35°	1K354-1600-100-XD	1730	1730	1730	1730	16.0	126.0	15.4	72.0
16.0	16	48.0	2.00	72.0	4	35°	1K354-1600-200-XD	*	*	*	*	16.0	126.0	15.4	72.0
	16	48.0	3.00	72.0	4	35°	1K354-1600-300-XD	*	*	*	*	16.0	126.0	15.4	72.0
20.0	20	60.0	2.50	90.0	4	35°	1K354-2000-250-XD	1730	1730	1730	1730	20.0	142.0	19.2	90.0
	20	60.0	3.00	90.0	4	35°	1K354-2000-300-XD	*	*	*	*	20.0	142.0	19.2	90.0
20.0	20	60.0	4.00	90.0	4	35°	1K354-2000-400-XD	*	*	*	*	20.0	142.0	19.2	90.0

CoroMill® Dura solid carbide end mill for general machining

For multi-materials

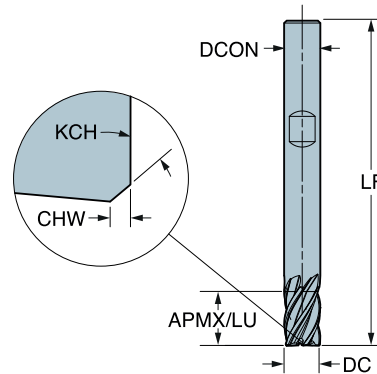
1K325 - 1.5xD

FHA 36°
 BSG COROMANT
 TCDC h10
 TCDCON h6
 ZEFP 5



Metric version

DC	CZC _{MS}	APMX	CHW	KCH	LU	ZEFP	FHA	Ordering code	Dimensions, mm									
									P	M	K	N	S	DCON _{MS}	LF	LB ₁	LB ₂	BHTA ₂
3.0	6	4.5	0.08	45°	4.5	5	36°	1K325-0300-XA	★	★	★	★	★	6.0	50.0	8.7	11.3	30°
4.0	6	6.0	0.13	45°	6.0	5	36°	1K325-0400-XA	★	★	★	★	★	6.0	54.0	11.6	13.3	30°
5.0	6	7.5	0.13	45°	7.5	5	36°	1K325-0500-XA	★	★	★	★	★	6.0	54.0	14.5	15.4	30°



Metric version

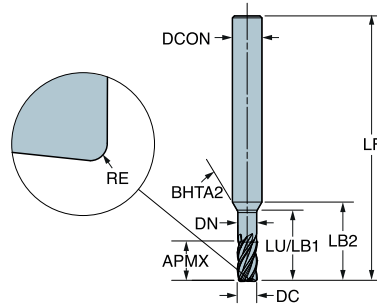
DC	CZC _{MS}	APMX	CHW	KCH	LU	ZEFP	FHA	Ordering code	Dimensions, mm						
									P	M	K	N	S	DCON _{MS}	LF
6.0	6	9.0	0.13	45°	9.0	5	36°	1K325-0600-XB	★	★	★	★	★	6.0	54.0
8.0	8	12.0	0.20	45°	12.0	5	36°	1K325-0800-XB	★	★	★	★	★	8.0	58.0
10.0	10	15.0	0.20	45°	15.0	5	36°	1K325-1000-XB	★	★	★	★	★	10.0	66.0
12.0	12	18.0	0.20	45°	18.0	5	36°	1K325-1200-XB	★	★	★	★	★	12.0	73.0
16.0	16	24.0	0.20	45°	24.0	5	36°	1K325-1600-XB	★	★	★	★	★	16.0	82.0
20.0	20	30.0	0.30	45°	30.0	5	36°	1K325-2000-XB	★	★	★	★	★	20.0	92.0

CoroMill® Dura solid carbide end mill for general machining

For multi-materials

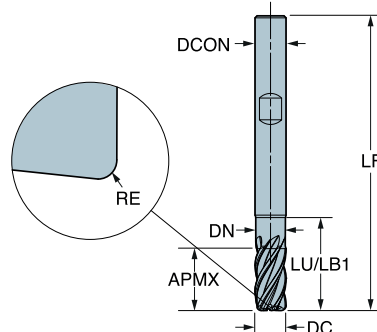
1K335 - 2xD

FHA 36°
 BSG COROMANT
 TCDC h10
 TCDCON h6
 ZEFP 5



Metric version

DC	CZC _{MS}	APMX	RE	LU	ZEFP	FHA	Ordering code	P M K N S				Dimensions, mm						
								1730	1730	1730	1730	DCON _{MS}	LF	DN	LB ₁	LB ₂	BHTA ₂	
3.0	6	6.0	0.20	10.5	5	36°	1K335-0300-020-XC	*	*	*	*	*	6.0	50.0	2.9	10.5	13.2	30°
	6	6.0	0.50	10.5	5	36°	1K335-0300-050-XC	*	*	*	*	*	6.0	50.0	2.9	10.5	13.2	30°
4.0	6	8.0	0.20	14.0	5	36°	1K335-0400-020-XC	*	*	*	*	*	6.0	54.0	3.8	14.0	15.9	30°
	6	8.0	0.50	14.0	5	36°	1K335-0400-050-XC	*	*	*	*	*	6.0	54.0	3.8	14.0	15.9	30°
5.0	6	10.0	0.50	17.5	5	36°	1K335-0500-050-XC	*	*	*	*	*	6.0	57.0	4.8	17.5	18.5	30°
	6	10.0	1.00	17.5	5	36°	1K335-0500-100-XC	*	*	*	*	*	6.0	57.0	4.8	17.5	18.5	30°



Metric version

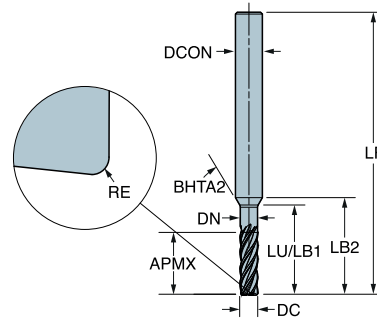
DC	CZC _{MS}	APMX	RE	LU	ZEFP	FHA	Ordering code	P M K N S				Dimensions, mm				
								1730	1730	1730	1730	DCON _{MS}	LF	DN	LB ₁	
6.0	6	12.0	0.50	18.0	5	36°	1K335-0600-050-XD	*	*	*	*	*	6.0	57.0	5.8	18.0
	6	12.0	1.00	18.0	5	36°	1K335-0600-100-XD	*	*	*	*	*	6.0	57.0	5.8	18.0
8.0	8	16.0	0.50	24.0	5	36°	1K335-0800-050-XD	*	*	*	*	*	8.0	63.0	7.7	24.0
	8	16.0	1.00	24.0	5	36°	1K335-0800-100-XD	*	*	*	*	*	8.0	63.0	7.7	24.0
8.0	8	16.0	2.00	24.0	5	36°	1K335-0800-200-XD	*	*	*	*	*	8.0	63.0	7.7	24.0
	8	16.0	2.00	24.0	5	36°	1K335-0800-200-XD	*	*	*	*	*	8.0	63.0	7.7	24.0
10.0	10	20.0	0.50	30.0	5	36°	1K335-1000-050-XD	*	*	*	*	*	10.0	72.0	9.6	30.0
	10	20.0	1.00	30.0	5	36°	1K335-1000-100-XD	*	*	*	*	*	10.0	72.0	9.6	30.0
10.0	10	20.0	2.00	30.0	5	36°	1K335-1000-200-XD	*	*	*	*	*	10.0	72.0	9.6	30.0
	10	20.0	2.00	30.0	5	36°	1K335-1000-200-XD	*	*	*	*	*	10.0	72.0	9.6	30.0
12.0	12	24.0	0.50	36.0	5	36°	1K335-1200-050-XD	*	*	*	*	*	12.0	83.0	11.5	36.0
	12	24.0	1.00	36.0	5	36°	1K335-1200-100-XD	*	*	*	*	*	12.0	83.0	11.5	36.0
12.0	12	24.0	2.00	36.0	5	36°	1K335-1200-200-XD	*	*	*	*	*	12.0	83.0	11.5	36.0
	12	24.0	3.00	36.0	5	36°	1K335-1200-300-XD	*	*	*	*	*	12.0	83.0	11.5	36.0
16.0	16	32.0	0.50	48.0	5	36°	1K335-1600-050-XD	*	*	*	*	*	16.0	100.0	15.4	48.0
	16	32.0	1.00	48.0	5	36°	1K335-1600-100-XD	*	*	*	*	*	16.0	100.0	15.4	48.0
16.0	16	32.0	2.00	48.0	5	36°	1K335-1600-200-XD	*	*	*	*	*	16.0	100.0	15.4	48.0
	16	32.0	3.00	48.0	5	36°	1K335-1600-300-XD	*	*	*	*	*	16.0	100.0	15.4	48.0
20.0	20	40.0	0.50	60.0	5	36°	1K335-2000-050-XD	*	*	*	*	*	20.0	114.0	19.2	60.0
	20	40.0	1.00	60.0	5	36°	1K335-2000-100-XD	*	*	*	*	*	20.0	114.0	19.2	60.0
20.0	20	40.0	2.00	60.0	5	36°	1K335-2000-200-XD	*	*	*	*	*	20.0	114.0	19.2	60.0
	20	40.0	3.00	60.0	5	36°	1K335-2000-300-XD	*	*	*	*	*	20.0	114.0	19.2	60.0
20.0	20	40.0	4.00	60.0	5	36°	1K335-2000-400-XD	*	*	*	*	*	20.0	114.0	19.2	60.0

CoroMill® Dura solid carbide end mill for general machining

For multi-materials

1K365 - 3.5xD

FHA 36°
 BSG COROMANT
 TCDC h10
 TCDCON h6
 ZEFP 5



Metric version

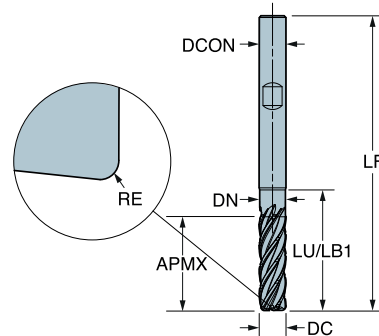
DC	CZC _{MS}	APMX	RE	LU	ZEFP	FHA	Ordering code	Dimensions, mm									
								P	M	K	N	S					
3.0	6	10.5	0.20	14.7	5	36°	1K365-0300-020-XC	1730	1730	1730	1730	DCON _{MS}	LF	DN	LB ₁	LB ₂	BHTA ₂
	6	10.5	0.50	14.7	5	36°	1K365-0300-050-XC	*	*	*	*	6.0	57.0	2.9	14.7	17.4	30°
4.0	6	14.0	0.20	19.6	5	36°	1K365-0400-020-XC	1730	1730	1730	1730	6.0	63.0	3.8	19.6	21.5	30°
	6	14.0	0.50	19.6	5	36°	1K365-0400-050-XC	*	*	*	*	6.0	63.0	3.8	19.6	21.5	30°
5.0	6	17.5	0.50	24.5	5	36°	1K365-0500-050-XC	1730	1730	1730	1730	6.0	66.0	4.8	24.5	25.5	30°
	6	17.5	1.00	24.5	5	36°	1K365-0500-100-XC	*	*	*	*	6.0	66.0	4.8	24.5	25.5	30°

CoroMill® Dura solid carbide end mill for general machining

For multi-materials

1K365 – 3.5xD

FHA 36°
 BSG COROMANT
 TCDC h10
 TCDCON h6
 ZEFP 5



Metric version

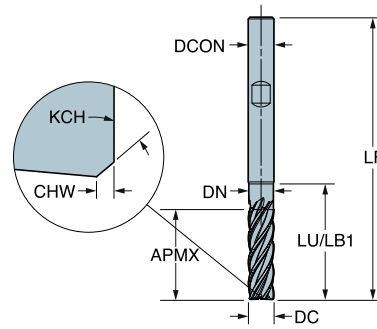
DC	CZC _{MS}	APMX	RE	LU	ZEFP	FHA	Ordering code	P M K N S				Dimensions, mm				
								1730	1730	1730	1730	DCON _{MS}	LF	DN	LB ₁	
6.0	6	21.0	0.50	27.0	5	36°	1K365-0600-050-XD	*	*	*	*	*	6.0	66.0	5.8	27.0
	6	21.0	1.00	27.0	5	36°	1K365-0600-100-XD	*	*	*	*	*	6.0	66.0	5.8	27.0
8.0	8	28.0	0.50	36.0	5	36°	1K365-0800-050-XD	*	*	*	*	*	8.0	73.0	7.7	36.0
	8	28.0	1.00	36.0	5	36°	1K365-0800-100-XD	*	*	*	*	*	8.0	73.0	7.7	36.0
	8	28.0	2.00	36.0	5	36°	1K365-0800-200-XD	*	*	*	*	*	8.0	73.0	7.7	36.0
10.0	10	35.0	0.50	45.0	5	36°	1K365-1000-050-XD	*	*	*	*	*	10.0	87.0	9.6	45.0
	10	35.0	1.00	45.0	5	36°	1K365-1000-100-XD	*	*	*	*	*	10.0	87.0	9.6	45.0
	10	35.0	2.00	45.0	5	36°	1K365-1000-200-XD	*	*	*	*	*	10.0	87.0	9.6	45.0
12.0	12	42.0	1.00	54.0	5	36°	1K365-1200-100-XD	*	*	*	*	*	12.0	104.0	11.5	54.0
	12	42.0	2.00	54.0	5	36°	1K365-1200-200-XD	*	*	*	*	*	12.0	104.0	11.5	54.0
	12	42.0	3.00	54.0	5	36°	1K365-1200-300-XD	*	*	*	*	*	12.0	104.0	11.5	54.0
16.0	16	56.0	1.00	72.0	5	36°	1K365-1600-100-XD	*	*	*	*	*	16.0	126.0	15.4	72.0
	16	56.0	2.00	72.0	5	36°	1K365-1600-200-XD	*	*	*	*	*	16.0	126.0	15.4	72.0
	16	56.0	3.00	72.0	5	36°	1K365-1600-300-XD	*	*	*	*	*	16.0	126.0	15.4	72.0
	16	56.0	4.00	72.0	5	36°	1K365-1600-400-XD	*	*	*	*	*	16.0	126.0	15.4	72.0
20.0	20	70.0	1.00	90.0	5	36°	1K365-2000-100-XD	*	*	*	*	*	20.0	142.0	19.2	90.0
	20	70.0	2.00	90.0	5	36°	1K365-2000-200-XD	*	*	*	*	*	20.0	142.0	19.2	90.0
	20	70.0	3.00	90.0	5	36°	1K365-2000-300-XD	*	*	*	*	*	20.0	142.0	19.2	90.0
	20	70.0	4.00	90.0	5	36°	1K365-2000-400-XD	*	*	*	*	*	20.0	142.0	19.2	90.0

CoroMill® Dura solid carbide end mill for general machining

For multi-materials

1K365 – 3.5xD

FHA 36°
 BSG COROMANT
 TCDC h10
 TCDCON h6
 ZEFP 5



Metric version

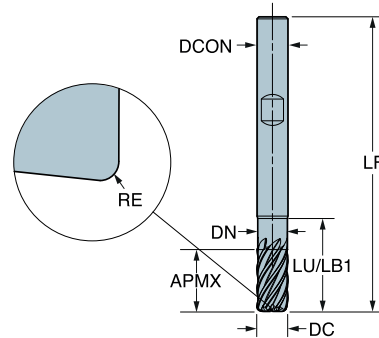
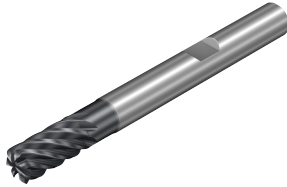
DC	CZC _{MS}	APMX	CHW	KCH	LU	ZEFP	FHA	Ordering code	Dimensions, mm							
									P	M	K	N	S	DCON _{MS}	LF	DN
6.0	6	21.0	0.13	45°	27.0	5	36°	1K365-0600-XD	1730	1730	1730	1730	6.0	66.0	5.8	27.0
8.0	8	28.0	0.20	45°	36.0	5	36°	1K365-0800-XD	1730	1730	1730	1730	8.0	73.0	7.7	36.0
10.0	10	35.0	0.20	45°	45.0	5	36°	1K365-1000-XD	1730	1730	1730	1730	10.0	87.0	9.6	45.0
12.0	12	42.0	0.20	45°	54.0	5	36°	1K365-1200-XD	1730	1730	1730	1730	12.0	104.0	11.5	54.0
16.0	16	56.0	0.20	45°	72.0	5	36°	1K365-1600-XD	1730	1730	1730	1730	16.0	126.0	15.4	72.0
20.0	20	70.0	0.30	45°	90.0	5	36°	1K365-2000-XD	1730	1730	1730	1730	20.0	142.0	19.2	90.0

CoroMill® Dura solid carbide end mill for general machining

For multi-materials

1K337 - 2xD

FHA 37°
 BSG COROMANT
 TCDC h10
 TCDCON h6
 ZEFP 7



Metric version

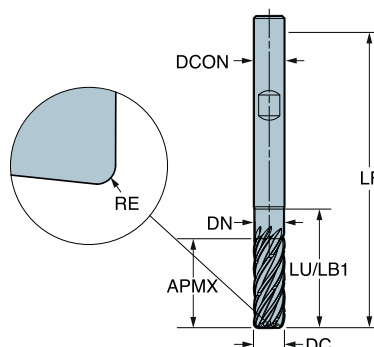
DC	CZC _{MS}	APMX	RE	LU	ZEFP	FHA	Ordering code	Dimensions, mm								
								P	M	K	N	S				
6.0	6	12.0	0.50	18.0	7	37°	1K337-0600-050-XD	★	★	★	★	★	6.0	57.0	5.8	18.0
	6	12.0	1.00	18.0	7	37°	1K337-0600-100-XD	★	★	★	★	★	6.0	57.0	5.8	18.0
8.0	8	16.0	0.50	24.0	7	37°	1K337-0800-050-XD	★	★	★	★	★	8.0	63.0	7.7	24.0
	8	16.0	1.00	24.0	7	37°	1K337-0800-100-XD	★	★	★	★	★	8.0	63.0	7.7	24.0
	8	16.0	2.00	24.0	7	37°	1K337-0800-200-XD	★	★	★	★	★	8.0	63.0	7.7	24.0
10.0	10	20.0	0.50	30.0	7	37°	1K337-1000-050-XD	★	★	★	★	★	10.0	72.0	9.6	30.0
	10	20.0	1.00	30.0	7	37°	1K337-1000-100-XD	★	★	★	★	★	10.0	72.0	9.6	30.0
	10	20.0	2.00	30.0	7	37°	1K337-1000-200-XD	★	★	★	★	★	10.0	72.0	9.6	30.0
12.0	12	24.0	0.50	36.0	7	37°	1K337-1200-050-XD	★	★	★	★	★	12.0	83.0	11.5	36.0
	12	24.0	1.00	36.0	7	37°	1K337-1200-100-XD	★	★	★	★	★	12.0	83.0	11.5	36.0
	12	24.0	2.00	36.0	7	37°	1K337-1200-200-XD	★	★	★	★	★	12.0	83.0	11.5	36.0
	12	24.0	3.00	36.0	7	37°	1K337-1200-300-XD	★	★	★	★	★	12.0	83.0	11.5	36.0
16.0	16	32.0	0.50	48.0	7	37°	1K337-1600-050-XD	★	★	★	★	★	16.0	100.0	15.4	48.0
	16	32.0	1.00	48.0	7	37°	1K337-1600-100-XD	★	★	★	★	★	16.0	100.0	15.4	48.0
	16	32.0	2.00	48.0	7	37°	1K337-1600-200-XD	★	★	★	★	★	16.0	100.0	15.4	48.0
	16	32.0	3.00	48.0	7	37°	1K337-1600-300-XD	★	★	★	★	★	16.0	100.0	15.4	48.0
20.0	20	40.0	0.50	60.0	7	37°	1K337-2000-050-XD	★	★	★	★	★	20.0	114.0	19.2	60.0
	20	40.0	1.00	60.0	7	37°	1K337-2000-100-XD	★	★	★	★	★	20.0	114.0	19.2	60.0
	20	40.0	2.00	60.0	7	37°	1K337-2000-200-XD	★	★	★	★	★	20.0	114.0	19.2	60.0
	20	40.0	3.00	60.0	7	37°	1K337-2000-300-XD	★	★	★	★	★	20.0	114.0	19.2	60.0
	20	40.0	4.00	60.0	7	37°	1K337-2000-400-XD	★	★	★	★	★	20.0	114.0	19.2	60.0
25.0	25	50.0	1.00	75.0	7	37°	1K337-2500-100-XD	★	★	★	★	★	25.0	135.0	24.0	75.0
	25	50.0	2.00	75.0	7	37°	1K337-2500-200-XD	★	★	★	★	★	25.0	135.0	24.0	75.0
	25	50.0	3.00	75.0	7	37°	1K337-2500-300-XD	★	★	★	★	★	25.0	135.0	24.0	75.0
	25	50.0	4.00	75.0	7	37°	1K337-2500-400-XD	★	★	★	★	★	25.0	135.0	24.0	75.0

CoroMill® Dura solid carbide end mill for general machining

For multi-materials

1K357 - 3xD

FHA 37°
 BSG COROMANT
 TCDC h10
 TCDCON h6
 ZEFP 7



Metric version

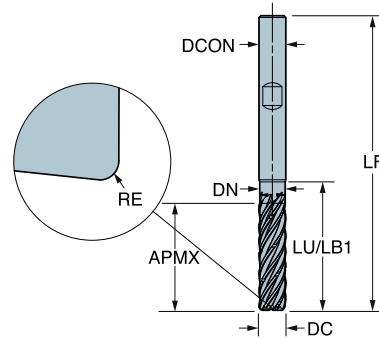
DC	CZC _{MS}	APMX	RE	LU	ZEFP	FHA	Ordering code	Material				Dimensions, mm				
								P	M	K	N	S	DCON _{MS}	LF	DN	LB ₁
6.0	6	18.0	0.50	24.0	7	37°	1K357-0600-050-XD	*	*	*	*	*	6.0	63.0	5.8	24.0
	6	18.0	1.00	24.0	7	37°	1K357-0600-100-XD	*	*	*	*	*	6.0	63.0	5.8	24.0
8.0	8	24.0	0.50	32.0	7	37°	1K357-0800-050-XD	*	*	*	*	*	8.0	73.0	7.7	32.0
	8	24.0	1.00	32.0	7	37°	1K357-0800-100-XD	*	*	*	*	*	8.0	73.0	7.7	32.0
10.0	8	24.0	2.00	32.0	7	37°	1K357-0800-200-XD	*	*	*	*	*	8.0	73.0	7.7	32.0
	10	30.0	0.50	40.0	7	37°	1K357-1000-050-XD	*	*	*	*	*	10.0	82.0	9.6	40.0
10.0	10	30.0	1.00	40.0	7	37°	1K357-1000-100-XD	*	*	*	*	*	10.0	82.0	9.6	40.0
	10	30.0	2.00	40.0	7	37°	1K357-1000-200-XD	*	*	*	*	*	10.0	82.0	9.6	40.0
12.0	12	36.0	1.00	48.0	7	37°	1K357-1200-100-XD	*	*	*	*	*	12.0	97.0	11.5	48.0
	12	36.0	2.00	48.0	7	37°	1K357-1200-200-XD	*	*	*	*	*	12.0	97.0	11.5	48.0
12.0	12	36.0	3.00	48.0	7	37°	1K357-1200-300-XD	*	*	*	*	*	12.0	97.0	11.5	48.0
	16	48.0	1.50	64.0	7	37°	1K357-1600-150-XD	*	*	*	*	*	16.0	115.0	15.4	64.0
16.0	16	48.0	2.00	64.0	7	37°	1K357-1600-200-XD	*	*	*	*	*	16.0	115.0	15.4	64.0
	16	48.0	3.00	64.0	7	37°	1K357-1600-300-XD	*	*	*	*	*	16.0	115.0	15.4	64.0
20.0	20	60.0	2.50	80.0	7	37°	1K357-2000-250-XD	*	*	*	*	*	20.0	135.0	19.2	80.0
	20	60.0	3.00	80.0	7	37°	1K357-2000-300-XD	*	*	*	*	*	20.0	135.0	19.2	80.0
20.0	20	60.0	4.00	80.0	7	37°	1K357-2000-400-XD	*	*	*	*	*	20.0	135.0	19.2	80.0
	25	75.0	2.00	100.0	7	37°	1K357-2500-200-XD	*	*	*	*	*	25.0	162.0	24.0	100.0
25.0	25	75.0	4.00	100.0	7	37°	1K357-2500-400-XD	*	*	*	*	*	25.0	162.0	24.0	100.0
	25	75.0	6.00	100.0	7	37°	1K357-2500-600-XD	*	*	*	*	*	25.0	162.0	24.0	100.0

CoroMill® Dura solid carbide end mill for general machining

For multi-materials

1K377 - 4xD

FHA 37°
 BSG COROMANT
 TCDC h10
 TCDCON h6
 ZEFP 7



Metric version

DC	CZC _{MS}	APMX	RE	LU	ZEFP	FHA	Ordering code	P M K N S				Dimensions, mm				
								1730	1730	1730	1730	DCON _{MS}	LF	DN	LB ₁	
6.0	6	24.0	0.50	28.8	7	37°	1K377-0600-050-XD	*	*	*	*	*	6.0	66.0	5.8	28.8
	6	24.0	1.00	28.8	7	37°	1K377-0600-100-XD	*	*	*	*	*	6.0	66.0	5.8	28.8
8.0	8	32.0	0.50	38.4	7	37°	1K377-0800-050-XD	*	*	*	*	*	8.0	77.0	7.7	38.4
	8	32.0	1.00	38.4	7	37°	1K377-0800-100-XD	*	*	*	*	*	8.0	77.0	7.7	38.4
	8	32.0	2.00	38.4	7	37°	1K377-0800-200-XD	*	*	*	*	*	8.0	77.0	7.7	38.4
10.0	10	40.0	1.00	48.0	7	37°	1K377-1000-100-XD	*	*	*	*	*	10.0	91.0	9.6	48.0
	10	40.0	2.00	48.0	7	37°	1K377-1000-200-XD	*	*	*	*	*	10.0	91.0	9.6	48.0
	10	40.0	3.00	48.0	7	37°	1K377-1000-300-XD	*	*	*	*	*	10.0	91.0	9.6	48.0
12.0	12	48.0	1.00	57.6	7	37°	1K377-1200-100-XD	*	*	*	*	*	12.0	104.0	11.5	57.6
	12	48.0	2.50	57.6	7	37°	1K377-1200-250-XD	*	*	*	*	*	12.0	104.0	11.5	57.6
	12	48.0	4.00	57.6	7	37°	1K377-1200-400-XD	*	*	*	*	*	12.0	104.0	11.5	57.6
16.0	16	64.0	2.00	76.8	7	37°	1K377-1600-200-XD	*	*	*	*	*	16.0	126.0	15.4	76.8
	16	64.0	3.00	76.8	7	37°	1K377-1600-300-XD	*	*	*	*	*	16.0	126.0	15.4	76.8
	16	64.0	4.00	76.8	7	37°	1K377-1600-400-XD	*	*	*	*	*	16.0	126.0	15.4	76.8
20.0	20	80.0	3.00	96.0	7	37°	1K377-2000-300-XD	*	*	*	*	*	20.0	149.0	19.2	96.0
	20	80.0	4.00	96.0	7	37°	1K377-2000-400-XD	*	*	*	*	*	20.0	149.0	19.2	96.0
	20	80.0	6.00	96.0	7	37°	1K377-2000-600-XD	*	*	*	*	*	20.0	149.0	19.2	96.0
25.0	25	100.0	3.00	120.0	7	37°	1K377-2500-300-XD	*	*	*	*	*	25.0	180.0	24.0	120.0
	25	100.0	4.00	120.0	7	37°	1K377-2500-400-XD	*	*	*	*	*	25.0	180.0	24.0	120.0
	25	100.0	6.00	120.0	7	37°	1K377-2500-600-XD	*	*	*	*	*	25.0	180.0	24.0	120.0

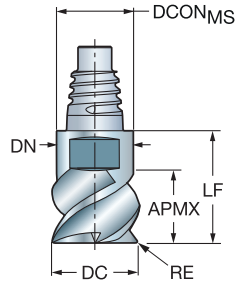
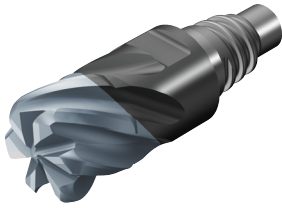
CoroMill® 316 brazed ceramic head for high speed roughing

For nickel-based alloys

Optimized

FHA
BSG
TCDC

35°
COROMANT
h9

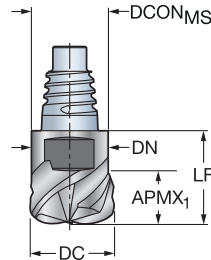
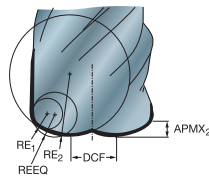


Metric version

							s Dimensions, mm			
DC	CZC _{MS}	APMX	RE	LU	ZEFP	Ordering code	SIKU	DCON _{MS}	LF	DN
10.0	E10	7.0	2.00	7.0	6	316-10FM635-10020D	★	9.7	15.9	9.7
12.0	E12	7.0	2.00	7.0	6	316-12FM635-12020D	★	11.7	18.5	11.7
16.0	E16	9.0	2.00	9.0	6	316-16FM635-16020D	★	15.5	25.7	15.5
20.0	E20	9.0	2.00	9.0	6	316-20FM635-20020D	★	19.3	28.3	19.3
25.0	E25	9.0	2.00	9.0	6	316-25FM635-25020D	★	24.2	32.3	24.2

FHA
BSG
TCDC

38°
COROMANT
h9



Metric version

								s Dimensions, mm				
DC	CZC _{MS}	APMX ₂	RE ₁	RE ₂	REEQ	DCF	ZEFP	Ordering code	SIKU	DCON _{MS}	LF	DN
10.0	E10	0.7	1.50	5.00	1.99	3.40	4	316-10HM438-10015D	★	9.7	15.9	9.7
12.0	E12	0.8	1.50	6.00	2.10	4.50	4	316-12HM438-12015D	★	11.7	18.5	11.7
16.0	E16	1.0	2.00	8.00	2.75	6.20	4	316-16HM438-16020D	★	15.5	25.7	15.5
20.0	E20	1.3	2.00	10.00	3.07	8.00	4	316-20HM438-20020D	★	19.3	28.3	19.5
25.0	E25	1.6	3.00	12.00	4.21	10.00	4	316-25HM438-25030D	★	24.2	32.3	24.2

Rotating tool adaptors

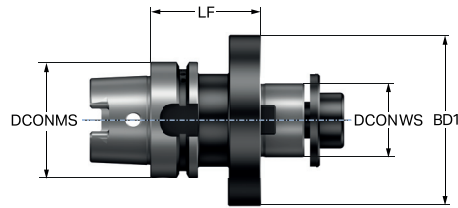
Machine side interface HSK	60-71
Machine side interface ISO 7388-1	72-75
Machine side interface MAS-BT	76-78
Machine side interface CAT-V	79-81

For complete assortment, see www.sandvik.coromant.com

HSK to arbor adaptor

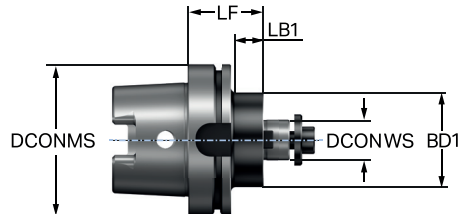
Machine side interface HSK A/C

Coolant through arbor



Metric bore

				Dimensions, mm												
CZC _{MS}	CZC _{WS}	CNSC	CXSC	Ordering code	DCON _{MS}	DBC	DCON _{WS}	LF	LB ₁	BD ₁	BAR	NM	KG	RPMX		
40	22	1	4	HA04-AR22-B048-050	40.0		22.0	50.0	50.0	48.0	80	45.00	0.49	30000		
63	32	1	4	HA06-AR32-B078-060	63.0		32.0	60.0	60.0	78.0	80	180.00	1.59	20500		
	40S	1	4	HA06-AR40-B092-060	63.0	66.7	40.0	60.0	60.0	87.0	80	300.00	1.84	20500		
80	40	1	4	HA08-AR40-B092-070	80.0		40.0	70.0	70.0	87.0	80	300.00	2.96	14000		



Metric bore

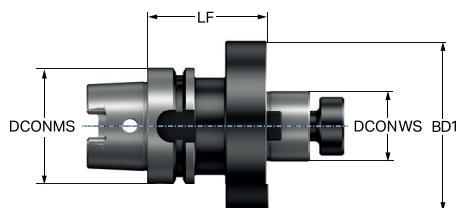
				Dimensions, mm												
CZC _{MS}	CZC _{WS}	CNSC	CXSC	Ordering code	DCON _{MS}	DBC	DCON _{WS}	LF	LB ₁	LB ₂	BD ₁	BD ₂	BAR	NM	KG	RPMX
40	16	1	4	HA04-AR16-B032-050	40.0		16.0	50.0	29.0	50.0	32.0	48.0	80	22.00	0.32	30000
50	16	1	4	HA05-AR16-B032-050	50.0		16.0	50.0	23.0	50.0	32.0	50.0	80	22.00	0.47	25000
	22	1	4	HA05-AR22-B048-060	50.0		22.0	60.0	34.0	60.0	48.0	50.0	80	45.00	0.80	25000
63	16	1	4	HA06-AR16-B032-050	63.0		16.0	50.0	24.0	50.0	32.0	63.0	80	22.00	0.73	20500
	22	1	4	HA06-AR22-B048-050	63.0		22.0	50.0	24.0	50.0	50.0	63.0	80	45.00	0.98	20500
	27	1	4	HA06-AR27-B063-060	63.0		27.0	60.0	24.0	60.0	60.0	63.0	80	80.00	1.35	20500
80	22	1	4	HA08-AR22-B048-050	80.0		22.0	50.0	23.0	50.0	50.0	80.0	80	45.00	1.41	14000
	27	1	4	HA08-AR27-B063-050	80.0		27.0	50.0	23.0	50.0	60.0	80.0	80	80.00	1.67	14000
	32	1	4	HA08-AR32-B078-060	80.0		32.0	60.0	34.0	60.0	78.0	80.0	80	180.00	2.21	14000
100	22	1	4	HA10-AR22-B048-050	100.0		22.0	50.0	18.0	50.0	50.0	100.0	80	45.00	2.28	12500
	22	1	4	HA10-AR22-B048-100	100.0		22.0	100.0	68.0	100.0	50.0	100.0	80	45.00	2.95	12500
	27	1	4	HA10-AR27-B063-050	100.0		27.0	50.0	18.0	50.0	50.0	100.0	80	80.00	2.51	12500
	27	1	4	HA10-AR27-B063-100	100.0		27.0	100.0	68.0	100.0	60.0	100.0	80	80.00	3.69	12500
	32	1	4	HA10-AR32-B078-050	100.0		32.0	50.0	20.0	50.0	63.0	100.0	80	180.00	2.79	12500
	32	1	4	HA10-AR32-B078-100	100.0		32.0	100.0	70.0	100.0	78.0	100.0	80	180.00	4.62	12500
	40S	1	4	HA10-AR40-B092-060	100.0	66.7	40.0	60.0	31.0	60.0	87.0	100.0	80	300.00	3.51	12500
	40S	1	4	HA10-AR40-B092-100	100.0	66.7	40.0	100.0	71.0	100.0	87.0	100.0	80	300.00	5.43	12500
125	32	1	4	HA12-AR32-B078-100	125.0		32.0	100.0	68.0	100.0	78.0	125.0	80	180.00	5.88	9500
	40S	1	4	HA12-AR40-B092-100	125.0	66.7	40.0	100.0	68.0	100.0	87.0	125.0	80	300.00	6.90	9500

For spare parts, visit www.sandvik.coromant.com

HSK to arbor adaptor

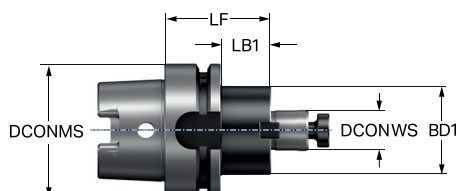
Machine side interface HSK A/C

Coolant through arbor



Inch bore

				Dimensions, mm									
CZC _{MS}	CZC _{WS}	CNSC	CXSC	Ordering code	DCON _{MS}	DBC	DCON _{WS}	LF	BD ₁	BAR	NM	KG	RPMX
63	1 1/2	1	4	HA06-AAR38-B092-065	63.0	66.7	38.1	65.0	87.0	80	220.00	2.08	20500



Inch bore

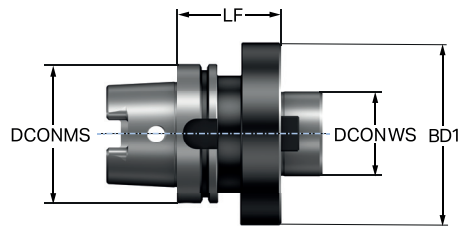
				Dimensions, mm										
CZC _{MS}	CZC _{WS}	CNSC	CXSC	Ordering code	DCON _{MS}	DBC	DCON _{WS}	LF	LB ₁	BD ₁	BAR	NM	KG	RPMX
63	3/4	1	4	HA06-AAR19-B042-050	63.0	19.1	50.0	23.0	43.0	80	25.00	0.90	20500	
	1	1	4	HA06-AAR25-B051-060	63.0	25.4	60.0	33.0	50.0	80	65.00	1.18	20500	
100	3/4	1	4	HA10-AAR19-B042-100	100.0	19.1	100.0	68.0	43.0	80	25.00	2.71	12500	
	1	1	4	HA10-AAR25-B051-100	100.0	25.4	100.0	68.0	50.0	80	65.00	3.08	12500	
	1 1/2	1	4	HA10-AAR38-B092-060	100.0	66.7	38.1	60.0	31.0	87.0	80	220.00	0.01	12500
	1 1/2	1	4	HA10-AAR38-B092-100	100.0	66.7	38.1	100.0	71.0	87.0	80	220.00	6.00	12500
125	1 1/2	1	4	HA12-AAR38-B092-100	125.0	66.7	38.1	100.0	68.0	87.0	80	220.00	6.88	9500

For spare parts, visit www.sandvik.coromant.com

HSK to arbor adaptor

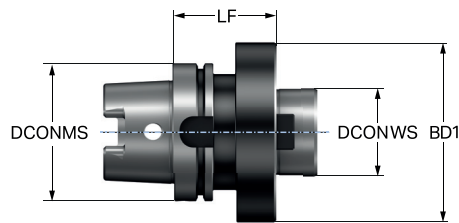
Machine side interface HSK A/C

Coolant through centre



Metric bore

		Dimensions, mm									
CZC _{MS}	CZC _{WS}	Ordering code	DCON _{MS}	DBC	DCON _{WS}	LF	BD ₁	ⓃM	ⓃG	RPMX	
100	60	HA10-AR60-A130-075	100.0	101.6	60.0	75.0	130.0	180.00	5.92	12500	
125	60	HA12-AR60-A130-085	125.0	101.6	60.0	85.0	130.0	180.00	8.71	9500	



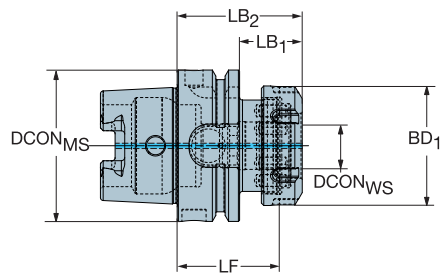
Inch bore

		Dimensions, mm									
CZC _{MS}	CZC _{WS}	Ordering code	DCON _{MS}	DBC	DCON _{WS}	LF	BD ₁	ⓃM	ⓃG	RPMX	
100	2 1/2	HA10-AAR63-A130-075	100.0	101.6	63.5	75.0	130.0	120.00	5.92	12500	
125	2 1/2	HA12-AAR63-A130-085	125.0	101.6	63.5	85.0	130.0	120.00	8.77	9500	

For spare parts, visit www.sandvik.coromant.com

HSK to MDI adaptor

Machine side interface HSK A/C/T



Dimensions, mm

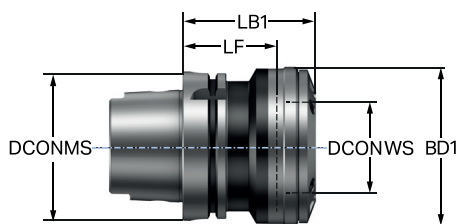
CZC _{MS}	CZC _{WS}	CNSC	CXSC	Ordering code	DCON _{MS}	DCON _{WS}	LF	LB ₁	LB ₂	BD ₁	BAR	NM	KG	RPMX
100	MDI-50	1	1	HT10-DM50-N-055	100.0	50.0	55.0	40.0	69.0	94.7	80	250.00	3.15	12500

For spare parts, visit www.sandvik.coromant.com

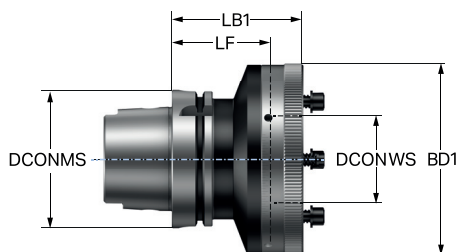
HSK to ISO 9766 adjustable adaptor

Machine side interface HSK A/C

ENG



					Dimensions, mm							
CZC _{MS}	CZC _{WS}	CNSC	CXSC	Ordering code	DCON _{MS}	DCON _{WS}	LF	LB ₁	BD ₁	BAR	KG	RPMX
63	1	1	1	392.410277-63 01 060C	63.0	78.0	60.0	84.6	86.0	20	2.05	12000
100	2	1	1	392.410277-100 02 065B	100.0	98.0	65.0	89.6	106.0	20	4.59	9000



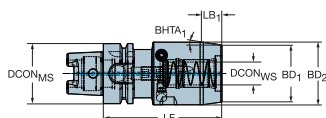
					Dimensions, mm							
CZC _{MS}	CZC _{WS}	CNSC	CXSC	Ordering code	DCON _{MS}	DCON _{WS}	LF	LB ₁	BD ₁	BAR	KG	RPMX
100	3	1	1	392.410277-100 03 085B	100.0	136.0	85.0	95.0	140.0	20	6.50	6000

For spare parts, visit www.sandvik.coromant.com

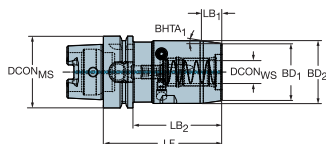
HSK to CoroChuck™ 930

Heavy Duty design

Machine side interface HSK A/C



					Dimensions, mm											
CZC _{MS}	CZC _{WS}	CNSC	CXSC	Ordering code	DCON _{MS}	DCON _{WS}	LSC	LF	LB ₁	BD ₁	BD ₂	BHTA ₁	BAR	NM	KG	RPMX
63	25	1	1	930-HA06-HD-25-110A	63.0	25.0	57	110.0	18.8	57.0	65.0	12°	80	10.00	2.10	20000
	32	1	1	930-HA06-HD-32-112A	63.0	32.0	61	112.0	18.8	68.0	76.0	12°	80	10.00	2.79	20000



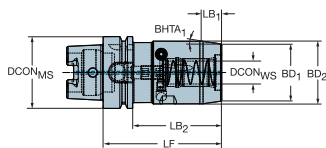
					Dimensions, mm													
CZC _{MS}	CZC _{WS}	CNSC	CXSC	Ordering code	DCON _{MS}	DCON _{WS}	LSC	LF	LB ₁	LB ₂	BD ₁	BD ₂	BD ₃	BHTA ₁	BAR	NM	KG	RPMX
63	20	1	1	930-HA06-HD-20-104A	63.0	20.0	51	104.0	17.8	78.0	50.0	55.0	62.9	8°	80	10.00	1.89	20000
80	32	1	1	930-HA08-HD-32-110A	80.0	32.0	61	110.0	18.8	84.0	68.0	76.0	80.0	12°	80	10.00	3.38	14000
100	20	1	1	930-HA10-HD-20-100A	100.0	20.0	51	100.0	17.8	71.0	50.0	55.0	99.9	8°	80	10.00	3.09	10000
	25	1	1	930-HA10-HD-25-106A	100.0	25.0	57	106.0	18.8	77.0	57.0	65.0	99.9	12°	80	10.00	3.63	10000
	32	1	1	930-HA10-HD-32-110A	100.0	32.0	61	110.0	18.8	81.0	68.0	76.0	99.9	12°	80	10.00	4.32	10000
	32	1	1	930-HA10-HD-32-180A	100.0	32.0	61	180.0	18.8	151.0	68.0	76.0	100.0	12°	80	10.00	6.76	10000

For spare parts, visit www.sandvik.coromant.com

HSK to CoroChuck™ 930

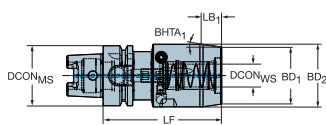
Heavy Duty design

Machine side interface HSK A/C



Dimensions, inch

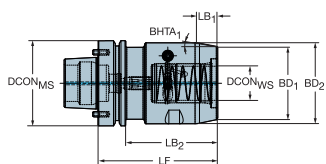
CZC _{MS}	CZC _{WS}	CNSC	CXSC	Ordering code	DCON _{MS}	DCON _{WS}	LSC	LF	LB ₁	LB ₂	BD ₁	BD ₂	BD ₃	BHTA ₁	PSI	FT/LBS	LBS	RPMX
100	1 1/4	1	1	930-HA10-HD-A31-110A	3.937	1.250	2.402	4.331	.740	3.189	2.677	2.992	3.933	12°	1160	7.38	9.54	10000



Dimensions, inch

CZC _{MS}	CZC _{WS}	CNSC	CXSC	Ordering code	DCON _{MS}	DCON _{WS}	LSC	LF	LB ₁	BD ₁	BD ₂	BHTA ₁	PSI	FT/LBS	LBS	RPMX
63	1 1/4	1	1	930-HA06-HD-A31-112	2.480	1.250	2.402	4.409	.740	2.677	2.992	12°	1160	7.38	6.53	20000

Machine side interface HSK F with pins for Makino



Dimensions, mm

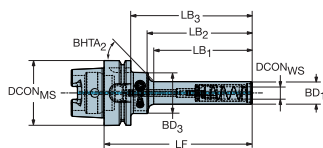
CZC _{MS}	CZC _{WS}	CNSC	CXSC	Ordering code	DCON _{MS}	DBC	DCON _{WS}	LSC	LF	LB ₁	LB ₂	BD ₁	BD ₂	BHTA ₁	BAR	NM	KG	RPMX
80	32	1	1	930-HF08-HD-32-112A	80.0	58.0	32.0	61	112.0	18.8	86.0	68.0	76.0	12°	80	10.00	3.42	24000

For spare parts, visit www.sandvik.coromant.com

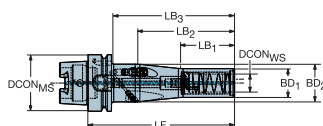
HSK to CoroChuck™ 930

Pencil design

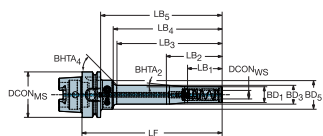
Machine side interface HSK A/C



				Dimensions, mm												
CZC _{MS}	CZC _{WS}	CNSC	CXSC	Ordering code	DCON _{MS}	DCON _{WS}	LSC	LF	LB ₁	LB ₂	BD ₁	BD ₂	BAR	NM	KG	RPMX
63	6	1	1	930-HA06-P-06-094A	63.0	6.0	37	94.0	45.8	68.0	14.5	40.0	80	8.00	0.83	20000
	8	1	1	930-HA06-P-08-094A	63.0	8.0	37	94.0	45.8	65.5	17.5	40.0	80	8.00	0.86	20000
	10	1	1	930-HA06-P-10-104A	63.0	10.0	41	104.0	55.8	75.5	20.0	40.0	80	8.00	0.90	20000
	10	1	1	930-HA06-P-10-144A	63.0	10.0	41	144.0	95.8	115.5	20.0	40.0	80	8.00	0.99	20000
	12	1	1	930-HA06-P-12-109A	63.0	12.0	46	109.0	60.8	83.0	22.0	40.0	80	8.00	0.93	20000
100	12	1	1	930-HA06-P-12-144A	63.0	12.0	46	144.0	95.8	118.0	22.0	40.0	80	8.00	1.03	20000
	12	1	1	930-HA10-P-12-115A	100.0	12.0	46	115.0	60.8	86.0	22.0	40.0	80	8.00	2.30	10000
	12	1	1	930-HA10-P-12-150A	100.0	12.0	46	150.0	95.8	121.0	22.0	40.0	80	8.00	2.45	10000



				Dimensions, mm														
CZC _{MS}	CZC _{WS}	CNSC	CXSC	Ordering code	DCON _{MS}	DCON _{WS}	LSC	LF	LB ₁	LB ₂	LB ₃	BD ₁	BD ₃	BHTA ₂	BAR	NM	KG	RPMX
63	20	1	1	930-HA06-P-20-163A	63.0	20.0	51	163.0	60.0	108.0	137.0	32.0	42.0	6°	80	8.00	1.53	20000
100	20	1	1	930-HA10-P-20-170A	100.0	20.0	51	170.0	60.0	108.0	141.0	32.0	42.0	6°	80	8.00	2.92	10000



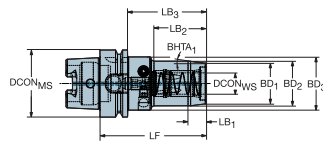
				Dimensions, mm																
CZC _{MS}	CZC _{WS}	CNSC	CXSC	Ordering code	DCON _{MS}	DCON _{WS}	LSC	LF	LB ₁	LB ₂	LB ₃	LB ₄	BD ₁	BD ₃	BD ₄	BHTA ₂	BAR	NM	KG	RPMX
63	12	1	1	930-HA06-P-12-194A	63.0	12.0	46	194.0	50.0	75.0	145.8	168.0	22.0	26.0	40.0	4°	80	8.00	1.28	20000
100	12	1	1	930-HA10-P-12-200A	100.0	12.0	46	200.0	50.0	75.0	145.8	171.0	22.0	26.0	40.0	4°	80	8.00	2.66	10000

For spare parts, visit www.sandvik.coromant.com

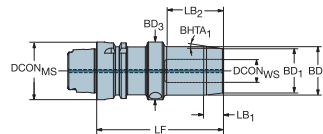
HSK to CoroChuck™ 930

Slender design

Machine side interface HSK A/C



				Dimensions, mm																
CZC _{MS}	CZC _{WS}	CNSC	CXSC	Ordering code	DCON _{MS}	DCON _{WS}	LSC	LF	LB ₁	LB ₂	LB ₃	BD ₁	BD ₂	BD ₃	BHTA ₁	BAR	NM	KG	RPMX	
40	6	1	1	930-HA04-S-06-070A	40.0	6.0	37	70.0	11.3	33.2	50.0	22.0	26.0	32.0	10°	80	8.00	0.39	30000	
				930-HA04-S-08-070A	40.0	8.0	37	70.0	11.3	35.3	50.0	24.0	28.0	32.0	10°	80	8.00	0.40	30000	
				930-HA04-S-10-075A	40.0	10.0	41	75.0	11.3	39.6	55.0	26.0	30.0	32.0	10°	80	8.00	0.44	30000	
				930-HA04-S-12-080A	40.0	12.0	46	80.0	11.3	41.0	60.0	28.0	32.0	33.5	10°	80	8.00	0.50	30000	
50	6	1	1	930-HA05-S-06-074A	50.0	6.0	37	74.0	11.3	30.2	48.0	22.0	26.0	40.0	10°	80	8.00	0.62	25000	
				930-HA05-S-08-074A	50.0	8.0	37	74.0	11.3	30.2	48.0	24.0	28.0	40.0	10°	80	8.00	0.64	25000	
				930-HA05-S-10-080A	50.0	10.0	41	80.0	11.3	34.2	54.0	26.0	30.0	40.0	10°	80	8.00	0.69	25000	
				930-HA05-S-12-085A	50.0	12.0	46	85.0	11.3	38.2	59.0	28.0	32.0	40.0	10°	80	8.00	0.74	25000	
63	6	1	1	930-HA06-S-06-074A	63.0	6.0	37	74.0	11.3	30.2	48.0	22.0	26.0	40.0	10°	80	8.00	0.87	20000	
				930-HA06-S-08-074A	63.0	8.0	37	74.0	11.3	30.2	48.0	24.0	28.0	40.0	10°	80	8.00	0.89	20000	
				930-HA06-S-10-080A	63.0	10.0	41	80.0	11.3	34.2	54.0	26.0	30.0	40.0	10°	80	8.00	0.94	20000	
				930-HA06-S-12-090A	63.0	12.0	46	90.0	11.3	38.2	64.0	28.0	32.0	50.0	10°	80	8.00	1.15	20000	
				930-HA06-S-20-100A	63.0	20.0	51	100.0	16.0	49.2	74.0	38.0	42.0	50.0	7°	80	8.00	1.33	20000	
100	12	1	1	930-HA10-S-12-095A	100.0	12.0	46	95.0	11.3	38.2	66.0	28.0	32.0	50.0	10°	80	8.00	2.53	10000	
				930-HA10-S-20-100A	100.0	20.0	51	100.0	16.0	49.2	71.0	38.0	42.0	50.0	7°	80	8.00	2.64	10000	



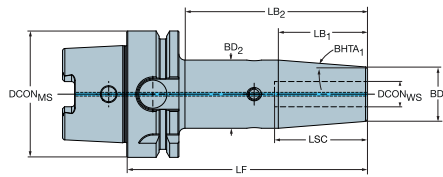
				Dimensions, mm																
CZC _{MS}	CZC _{WS}	CNSC	CXSC	Ordering code	DCON _{MS}	DCON _{WS}	LSC	LF	LB ₁	LB ₂	BD ₁	BD ₂	BHTA ₁	BAR	NM	KG	RPMX			
40	12	1	1	930-HA04-S-12-096A	40.0	12.0	46	96.0	11.3	38.2	28.0	32.0	10°	80	8.00	0.65	40000			
50	20	1	1	930-HA05-S-20-090A	50.0	20.0	51	90.0	16.0	64.0	37.6	41.5	7°	80	8.00	0.87	25000			
20	1	1	1	930-HA05-S-20-110A	50.0	20.0	51	110.0	16.0	49.2	38.0	42.0	7°	80	8.00	1.14	36000			
63	25	1	1	930-HA06-S-25-108A	63.0	25.0	57	108.0	12.9	81.1	45.0	50.0	11°	80	8.00	1.58	20000			
80	25	1	1	930-HA08-S-25-110A	80.0	25.0	57	110.0	12.9	83.1	45.0	50.0	11°	80	8.00	2.05	14000			
100	25	1	1	930-HA10-S-25-110A	100.0	25.0	57	110.0	12.9	80.1	45.0	50.0	11°	80	8.00	2.92	10000			

For spare parts, visit www.sandvik.coromant.com



HSK to shrink fit chuck

Machine side interface HSK A/C

Internal coolant supply



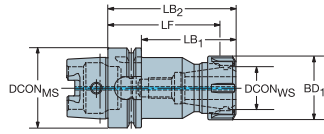
Inch bore

				Dimensions, mm, inch														
CZC _{MS}	CZC _{WS}	CNSC	CXSC	Ordering code	DCON _{MS}	DCON _{WS}	LSC	LF	LB ₁	LB ₂	BD ₁	BD ₂	BHTA ₁	BHTA ₂			RPMX	
63.0	1/8	1	1	HA06-A-SH03-P-120	63.0	3.2	13	120.0	26.1	91.2	9.0	11.6	3°	5°	80	0.77	20500	
				<i>2.480</i>	<i>.125</i>	<i>.512</i>	<i>4.724</i>	<i>1.029</i>	<i>3.593</i>	<i>.354</i>	<i>.457</i>	<i>1160</i>						
3/16	1	1	1	HA06-A-SH05-P-120	63.0	4.8	18	120.0	26.1	91.2	11.0	13.6	3°	5°	80	1.09	20500	
				<i>2.480</i>	<i>.187</i>	<i>.709</i>	<i>4.724</i>	<i>1.029</i>	<i>3.593</i>	<i>.433</i>	<i>.536</i>	<i>1160</i>						
1/4	1	1	1	HA06-A-SH06-S-120	63.0	6.4	36	120.0	38.1	91.0	21.0	27.0	4°	0°	80	1.00	20500	
				<i>2.480</i>	<i>.250</i>	<i>1.417</i>	<i>4.724</i>	<i>1.501</i>	<i>3.583</i>	<i>.827</i>	<i>1.063</i>	<i>1160</i>						
5/16	1	1	1	HA06-A-SH08-S-120	63.0	7.9	36	120.0	38.1	91.0	21.0	27.0	4°	0°	80	0.99	20500	
				<i>2.480</i>	<i>.313</i>	<i>1.417</i>	<i>4.724</i>	<i>1.501</i>	<i>3.583</i>	<i>.827</i>	<i>1.063</i>	<i>1160</i>						
3/8	1	1	1	HA06-A-SH09-S-120	63.0	9.5	41	120.0	50.8	91.0	24.0	32.0	4°	0°	80	1.11	20500	
				<i>2.480</i>	<i>.375</i>	<i>1.614</i>	<i>4.724</i>	<i>2.001</i>	<i>3.583</i>	<i>.945</i>	<i>1.260</i>	<i>1160</i>						
1/2	1	1	1	HA06-A-SH12-S-120	63.0	12.7	44	120.0	50.8	91.0	24.0	32.0	4°	0°	80	1.09	20500	
				<i>2.480</i>	<i>.500</i>	<i>1.732</i>	<i>4.724</i>	<i>2.001</i>	<i>3.583</i>	<i>.945</i>	<i>1.260</i>	<i>1160</i>						
5/8	1	1	1	HA06-A-SH16-S-120	63.0	15.9	49	120.0	44.4	91.0	27.0	34.0	4°	0°	80	1.14	20500	
				<i>2.480</i>	<i>.625</i>	<i>1.929</i>	<i>4.724</i>	<i>1.751</i>	<i>3.583</i>	<i>1.063</i>	<i>1.339</i>	<i>1160</i>						
3/4	1	1	1	HA06-A-SH19-S-120	63.0	19.1	51	120.0	57.1	91.0	33.0	42.0	4°	0°	80	1.39	20500	
				<i>2.480</i>	<i>.750</i>	<i>2.008</i>	<i>4.724</i>	<i>2.251</i>	<i>3.583</i>	<i>1.299</i>	<i>1.654</i>	<i>1160</i>						
1	1	1	1	HA06-A-SH25-S-120	63.0	25.4	57	120.0	57.1	93.6	44.0	53.0	4°	0°	80	1.83	20500	
				<i>2.480</i>	<i>1.000</i>	<i>2.244</i>	<i>4.724</i>	<i>2.251</i>	<i>3.685</i>	<i>1.732</i>	<i>2.087</i>	<i>1160</i>						
1 1/4	1	1	1	HA06-A-SH32-S-120	63.0	31.8	61	120.0	57.1	93.6	44.0	53.0	4°	0°	80	1.67	20500	
				<i>2.480</i>	<i>1.250</i>	<i>2.402</i>	<i>4.724</i>	<i>2.251</i>	<i>3.685</i>	<i>1.732</i>	<i>2.087</i>	<i>1160</i>						
100.0	1/4	1	1	HA10-A-SH06-S-120	100.0	6.4	36	120.0	38.1	86.0	21.0	27.0	4°	0°	80	2.34	12500	
				<i>3.937</i>	<i>.250</i>	<i>1.417</i>	<i>4.724</i>	<i>1.501</i>	<i>3.386</i>	<i>.827</i>	<i>1.063</i>	<i>1160</i>						
5/16	1	1	1	HA10-A-SH08-S-120	100.0	7.9	36	120.0	38.1	86.0	21.0	27.0	4°	0°	80	2.33	12500	
				<i>3.937</i>	<i>.313</i>	<i>1.417</i>	<i>4.724</i>	<i>1.501</i>	<i>3.386</i>	<i>.827</i>	<i>1.063</i>	<i>1160</i>						
3/8	1	1	1	HA10-A-SH09-S-120	100.0	9.5	41	120.0	50.8	86.0	24.0	32.0	4°	0°	80	2.45	12500	
				<i>3.937</i>	<i>.375</i>	<i>1.614</i>	<i>4.724</i>	<i>2.001</i>	<i>3.386</i>	<i>.945</i>	<i>1.260</i>	<i>1160</i>						
1/2	1	1	1	HA10-A-SH12-S-120	100.0	12.7	44	120.0	50.8	86.0	24.0	32.0	4°	0°	80	2.42	12500	
				<i>3.937</i>	<i>.500</i>	<i>1.732</i>	<i>4.724</i>	<i>2.001</i>	<i>3.386</i>	<i>.945</i>	<i>1.260</i>	<i>1160</i>						
5/8	1	1	1	HA10-A-SH16-S-120	100.0	15.9	49	120.0	44.4	86.0	27.0	34.0	4°	0°	80	2.47	12500	
				<i>3.937</i>	<i>.625</i>	<i>1.929</i>	<i>4.724</i>	<i>1.751</i>	<i>3.386</i>	<i>1.063</i>	<i>1.339</i>	<i>1160</i>						
3/4	1	1	1	HA10-A-SH19-S-120	100.0	19.1	51	120.0	57.1	86.0	33.0	42.0	4°	0°	80	2.70	12500	
				<i>3.937</i>	<i>.750</i>	<i>2.008</i>	<i>4.724</i>	<i>2.251</i>	<i>3.386</i>	<i>1.299</i>	<i>1.654</i>	<i>1160</i>						
1	1	1	1	HA10-A-SH25-S-120	100.0	25.4	57	120.0	57.1	86.0	44.0	53.0	4°	0°	80	3.15	12500	
				<i>3.937</i>	<i>1.000</i>	<i>2.244</i>	<i>4.724</i>	<i>2.251</i>	<i>3.386</i>	<i>1.732</i>	<i>2.087</i>	<i>1160</i>						
1 1/4	1	1	1	HA10-A-SH32-S-120	100.0	31.8	61	120.0	57.1	86.0	44.0	53.0	4°	0°	80	2.99	12500	
				<i>3.937</i>	<i>1.250</i>	<i>2.402</i>	<i>4.724</i>	<i>2.251</i>	<i>3.386</i>	<i>1.732</i>	<i>2.087</i>	<i>1160</i>						

HSK to ER collet chuck

Machine side interface HSK A/C

Workpiece side interface DIN 6499-B



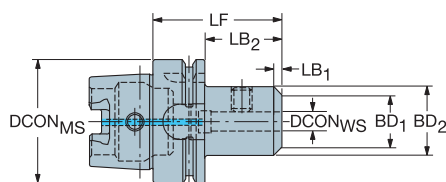
				Dimensions, mm, inch									
CZC _{MS}	CZC _{WS}	CNSC	CXSC	Ordering code	DCON _{MS}	DCON _{WS}	LF	LB ₁	LB ₂	BD ₁	BAR PSI	KG	RPMX
100.0	ER20	1	1	392.41014-100 20 100	100.0	21.0	88.5	64.5	100.0	34.0	80	2.32	12500
					<i>3.937</i>	<i>.827</i>	<i>3.484</i>	<i>2.539</i>	<i>3.937</i>	<i>1.339</i>	<i>1160</i>		
	ER25	1	1	392.41014-100 25 100	100.0	26.0	88.0	65.0	100.0	42.0	80	2.51	12500
					<i>3.937</i>	<i>1.024</i>	<i>3.465</i>	<i>2.559</i>	<i>3.937</i>	<i>1.654</i>	<i>1160</i>		

For spare parts, visit www.sandvik.coromant.com

HSK to Weldon adaptor

Machine side interface HSK A/C

Workpiece side interface ANSI B94.19



Inch bore

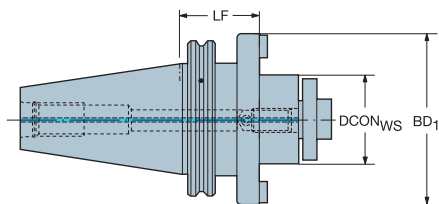
					Dimensions, mm, inch							
CZC _{MS}	CZC _{WS}	CNSC	CXSC	Ordering code	DCON _{MS}	DCON _{WS}	LF	LB ₁	BD ₁	$\frac{\text{BAR}}{\text{PSI}}$	$\frac{\text{KG}}$	RPMX
63.0	1/4	1	1	A392.41020-63 06 060	63.0	6.4	60.0	29.0	22.2	80	0.70	20500
					<i>2.480</i>	<i>.250</i>	<i>2.362</i>	<i>1.142</i>	<i>.875</i>	<i>1160</i>		
	3/8	1	1	A392.41020-63 09 070C	63.0	9.5	70.0	39.0	25.4	80	0.77	20500
					<i>2.480</i>	<i>.375</i>	<i>2.756</i>	<i>1.535</i>	<i>1.000</i>	<i>1160</i>		
	1/2	1	1	A392.41020-63 12 075C	63.0	12.7	75.0	44.0	31.7	80	0.88	20500
					<i>2.480</i>	<i>.500</i>	<i>2.953</i>	<i>1.732</i>	<i>1.248</i>	<i>1160</i>		
	5/8	1	1	A392.41020-63 15 080C	63.0	15.9	80.0	51.5	41.0	80	1.13	20500
					<i>2.480</i>	<i>.625</i>	<i>3.150</i>	<i>2.028</i>	<i>1.614</i>	<i>1160</i>		
100.0	1/4	1	1	A392.41020-100 06 070	100.0	6.4	70.0	27.0	22.2	80	2.10	12500
					<i>3.937</i>	<i>.250</i>	<i>2.756</i>	<i>1.063</i>	<i>.875</i>	<i>1160</i>		
	3/8	1	1	A392.41020-100 09 080B	100.0	9.5	80.0	37.0	25.4	80	2.15	12500
					<i>3.937</i>	<i>.375</i>	<i>3.150</i>	<i>1.457</i>	<i>1.000</i>	<i>1160</i>		
	1/2	1	1	A392.41020-100 12 080B	100.0	12.7	80.0	39.0	31.7	80	2.24	12500
					<i>3.937</i>	<i>.500</i>	<i>3.150</i>	<i>1.535</i>	<i>1.248</i>	<i>1160</i>		
	5/8	1	1	A392.41020-100 15 090B	100.0	15.9	90.0	49.0	41.0	80	2.52	12500
					<i>3.937</i>	<i>.625</i>	<i>3.543</i>	<i>1.929</i>	<i>1.614</i>	<i>1160</i>		

For spare parts, visit www.sandvik.coromant.com

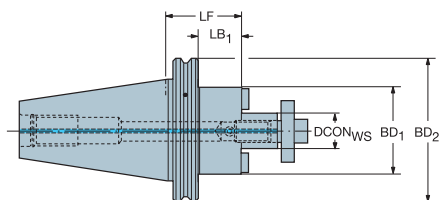
ISO 7388-1 to arbor adaptor

Machine side interface compatible with DIN 69871-ADB

Coolant through arbor



					Dimensions, mm									
CZC _{MS}	CZC _{WS}	CNSC	CXSC	Ordering code	DBC	CRKS	DCON _{WS}	LF	BD ₁	BAR	KG	RPMX		
40	32	7	4	A1B05-40 32 100		M16	32.0	100.0	78.0	80	3.51	18000		
	40S	7	4	A1B05-40 40 060	66.7	M16	40.0	60.0	87.0	80	2.49	18000		

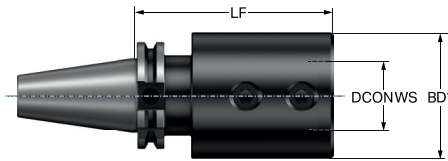


					Dimensions, mm									
CZC _{MS}	CZC _{WS}	CNSC	CXSC	Ordering code	DBC	CRKS	DCON _{WS}	LF	LB ₁	BD ₁	BD ₂	BAR	KG	RPMX
40	16	7	4	A1B05-40 16 160		M16	16.0	160.0	138.9	36.0	63.5	80	1.82	16000
	22	7	4	A1B05-40 22 160		M16	22.0	160.0	138.9	48.0	63.5	80	2.70	16000
	27	7	4	A1B05-40 27 160		M16	27.0	160.0	139.9	60.0	63.5	80	3.70	16000
50	22	7	4	A1B05-50 22 160		M24	22.0	160.0	137.9	48.0	97.5	80	4.28	12000
	27	7	4	A1B05-50 27 160		M24	27.0	160.0	137.9	60.0	97.5	80	5.33	12000
	32	7	4	A1B05-50 32 160		M24	32.0	160.0	137.9	78.0	97.5	80	7.56	12000
	40S	7	4	A1B05-50 40 100	66.7	M24	40.0	100.0	79.9	89.0	97.5	80	6.34	12000

For spare parts, visit www.sandvik.coromant.com

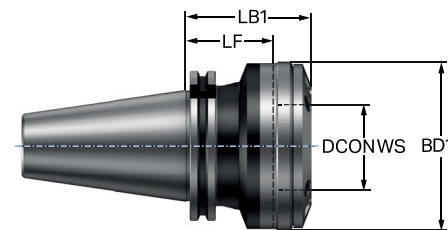
ISO 7388-1 to ISO 9766 adaptor

Machine side interface compatible with DIN 69871-ADB

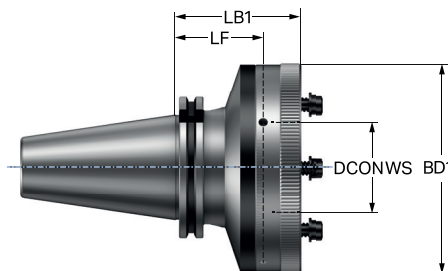


					Dimensions, mm						
CZC _{MS}	CZC _{WS}	CNSC	CXSC	Ordering code	CRKS	DCON _{WS}	LF	BD ₁	BAR	KG	RPMX
40	40	7	1	A1B27-40 40 120	M16	40.0	120.0	75.0	80	3.09	16000

ISO 7388-1 to ISO 9766 adjustable adaptor



					Dimensions, mm							
CZC _{MS}	CZC _{WS}	CNSC	CXSC	Ordering code	CRKS	DCON _{WS}	LF	LB ₁	BD ₁	BAR	KG	RPMX
40	1	7	1	392B.140277-40 01 055	M16	78.0	55.0	79.6	86.0	20	2.17	12000
50	2	7	1	392B.140277-50 02 055	M24	98.0	55.0	79.6	106.0	20	4.97	9000



					Dimensions, mm							
CZC _{MS}	CZC _{WS}	CNSC	CXSC	Ordering code	CRKS	DCON _{WS}	LF	LB ₁	BD ₁	BAR	KG	RPMX
50	3	7	1	392B.140277-50 03 075	M24	136.0	75.0	85.0	140.0	20	6.81	6000

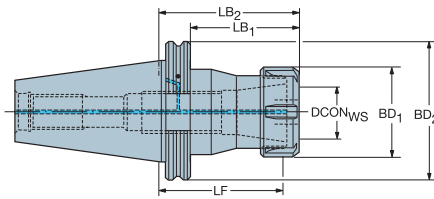
For spare parts, visit www.sandvik.coromant.com

ISO 7388-1 to ISO 9766 adaptor

ISO 7388-1 to ER collet chuck

Machine side interface compatible with DIN 69871-ADB

Workpiece side interface DIN 6499-B

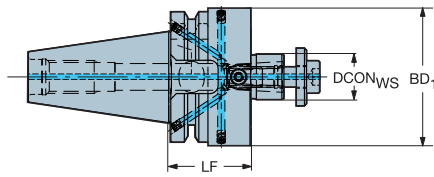


					Dimensions, mm									
CZC _{MS}	CZC _{WS}	CNSC	CXSC	Ordering code	CRKS	DCON _{WS}	LF	LB ₁	LB ₂	BD ₁	BD ₂	BAR	KG	RPMX
40	ER20	7	1	A1B14-40 20 160	M16	21.0	148.8	138.9	160.0	34.0	63.5	80	1.56	16000
	ER25	7	1	A1B14-40 25 160	M16	26.0	148.3	138.9	160.0	42.0	63.5	80	1.91	16000
	ER32	7	1	A1B14-40 32 160	M16	33.0	147.3	140.1	160.0	50.0	63.5	80	2.35	16000
	ER40	7	1	A1B14-40 40 160	M16	41.0	145.3	140.1	160.0	63.0	63.5	80	2.36	16000
50	ER20	7	1	A1B14-50 20 160	M24	21.0	148.8	137.9	160.0	34.0	97.5	80	3.30	12000
	ER25	7	1	A1B14-50 25 160	M24	26.0	148.3	137.9	160.0	42.0	97.5	80	3.63	12000
	ER32	7	1	A1B14-50 32 160	M24	33.0	147.3	137.9	160.0	50.0	97.5	80	4.05	12000
	ER40	7	1	A1B14-50 40 160	M24	41.0	145.3	137.9	160.0	63.0	97.5	80	4.95	12000

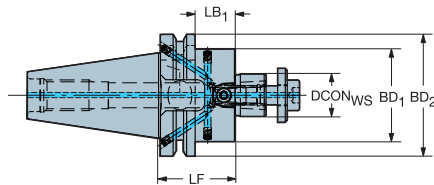
For spare parts, visit www.sandvik.coromant.com

MAS-BT 403 to arbor adaptor

Machine side interface compatible with JIS B 6339



					Dimensions, mm									
CZC _{MS}	CZC _{WS}	CNSC	CXSC	Ordering code	DBC	CRKS	DCON _{WS}	LF	BD ₁	BD ₂	BAR	KG	RPMX	
40	32	7	4	A2B05-40 32 100		M16	32.0	100.0	78.0	63.0	80	3.47	18000	
	40S	7	4	A2B05-40 40 100	66.7	M16	40.0	100.0	87.0	63.0	80	4.04	16000	

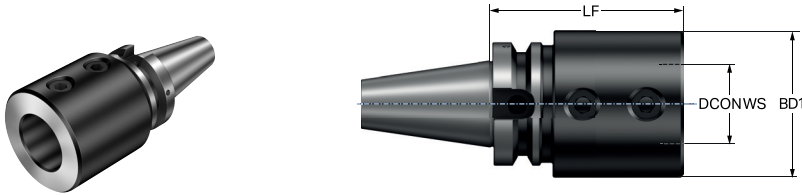


					Dimensions, mm									
CZC _{MS}	CZC _{WS}	CNSC	CXSC	Ordering code	DBC	CRKS	DCON _{WS}	LF	LB ₁	BD ₁	BD ₂	BAR	KG	RPMX
40	16	7	4	A2B05-40 16 160		M16	16.0	160.0	131.0	36.0	63.0	80	1.89	16000
	22	7	4	A2B05-40 22 160		M16	22.0	160.0	131.0	48.0	63.0	80	2.74	16000
	27	7	4	A2B05-40 27 160		M16	27.0	160.0	131.1	59.0	63.0	80	3.72	16000
50	22	7	4	A2B05-50 22 160		M24	22.0	160.0	119.0	48.0	100.0	80	5.02	12000
	27	7	4	A2B05-50 27 160		M24	27.0	160.0	119.0	60.0	100.0	80	5.92	12000
	32	7	4	A2B05-50 32 160		M24	32.0	160.0	119.0	78.0	100.0	80	7.92	12000
	40S	7	4	A2B05-50 40 100	66.7	M24	40.0	100.0	86.0	87.0	100.0	80	6.59	12000

For spare parts, visit www.sandvik.coromant.com

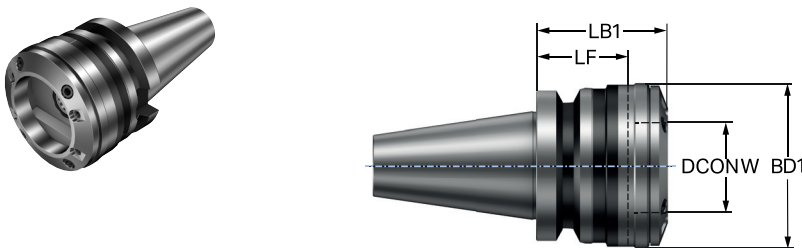
MAS-BT 403 to ISO 9766 adaptor

Machine side interface compatible with JIS B 6339

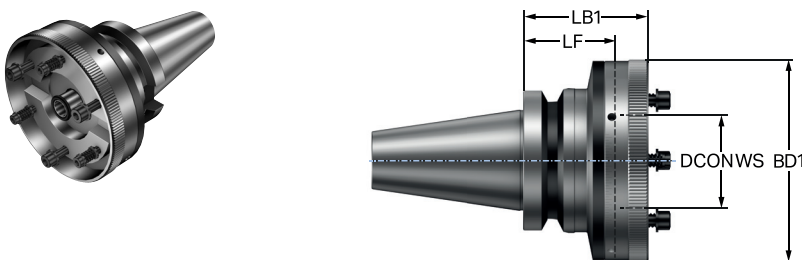


				Dimensions, mm							
CZC _{MS}	CZC _{WS}	CNSC	CXSC	Ordering code	CRKS	DCON _{WS}	LF	BD ₁	BAR	KG	RPMX
40	40	7	1	A2B27-40 40 100	M16	40.0	100.0	75.0	80	2.60	16000

MAS-BT 403 to ISO 9766 adjustable adaptor



				Dimensions, mm								
CZC _{MS}	CZC _{WS}	CNSC	CXSC	Ordering code	CRKS	DCON _{WS}	LF	LB ₁	BD ₁	BAR	KG	RPMX
40	1	7	1	392B.55277-40 01 055	M16	78.0	55.0	79.6	86.0	20	2.30	12000
50	2	7	1	392B.58277-50 02 063	M24	98.0	63.0	87.6	106.0	20	5.71	9000



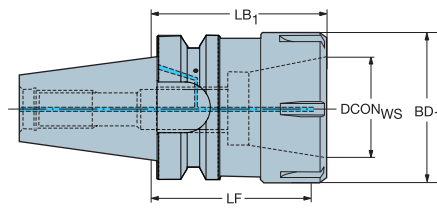
				Dimensions, mm								
CZC _{MS}	CZC _{WS}	CNSC	CXSC	Ordering code	CRKS	DCON _{WS}	LF	LB ₁	BD ₁	BAR	KG	RPMX
50	3	7	1	392B.58277-50 03 080	M24	136.0	80.0	90.0	140.0	20	7.17	6000

For spare parts, visit www.sandvik.coromant.com

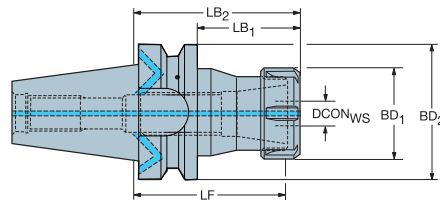
MAS-BT 403 to ER collet chuck

Machine side interface compatible with JIS B 6339

Workpiece side interface DIN 6499-B



					Dimensions, mm							
CZC _{MS}	CZC _{WS}	CNSC	CXSC	Ordering code	CRKS	DCON _{WS}	LF	LB ₁	BD ₁	BAR	KG	RPMX
40	ER40	7	1	A2B14-40 40 100	M16	41.0	85.3	100.0	63.0	80	1.62	18000
	ER40	7	1	A2B14-40 40 160	M16	41.0	145.3	160.0	63.0	80	2.43	16000

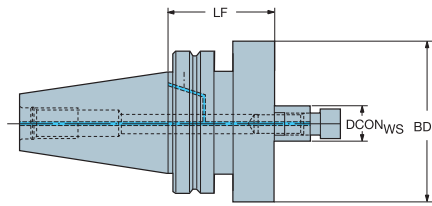


					Dimensions, mm									
CZC _{MS}	CZC _{WS}	CNSC	CXSC	Ordering code	CRKS	DCON _{WS}	LF	LB ₁	LB ₂	BD ₁	BD ₂	BAR	KG	RPMX
40	ER20	7	1	A2B14-40 20 160	M16	21.0	148.8	131.0	160.0	34.0	63.0	80	1.66	16000
	ER25	7	1	A2B14-40 25 160	M16	26.0	148.3	131.0	160.0	42.0	63.0	80	1.98	16000
	ER32	7	1	A2B14-40 32 100	M16	33.0	87.3	71.0	100.0	50.0	63.0	80	1.57	18000
	ER32	7	1	A2B14-40 32 160	M16	33.0	147.3	131.0	160.0	50.0	63.0	80	2.40	16000
50	ER20	7	1	A2B14-50 20 160	M24	21.0	148.8	119.0	160.0	34.0	100.0	80	4.15	12000
	ER25	7	1	A2B14-50 25 160	M24	26.0	148.3	119.0	160.0	42.0	100.0	80	4.42	12000
	ER32	7	1	A2B14-50 32 160	M24	33.0	147.3	119.0	160.0	50.0	100.0	80	4.77	12000
	ER40	7	1	A2B14-50 40 100	M24	41.0	85.3	59.0	100.0	63.0	100.0	80	4.25	12000
ER40	7	1	A2B14-50 40 160	M24	41.0	145.3	119.0	160.0	63.0	100.0	80	5.47	12000	

For spare parts, visit www.sandvik.coromant.com

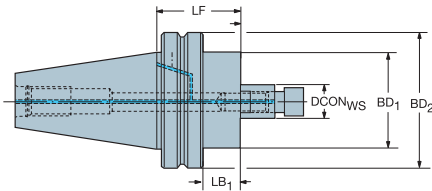
CAT-V to arbor adaptor

Machine side interface compatible with ASME B5.50-1985



Inch pilot

					Dimensions, mm							
CZC _{MS}	CZC _{WS}	CNSC	CXSC	Ordering code	DBC	CRKS	DCON _{WS}	LF	BD ₁	BAR	KG	RPMX
40	1 1/4	7	4	AA3B05-40 32 101		5/	31.8	101.6	69.9	80	2.82	18000
	1 1/2	7	4	AA3B05-40 38 101	66.7	5/	38.1	101.6	95.3	80	3.75	18000



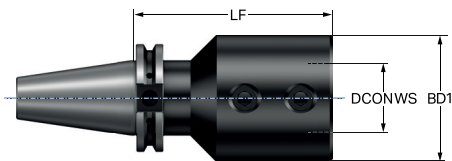
Inch pilot

					Dimensions, mm								
CZC _{MS}	CZC _{WS}	CNSC	CXSC	Ordering code	CRKS	DCON _{WS}	LF	LB ₁	BD ₁	BD ₂	BAR	KG	RPMX
40	3/4	7	4	AA3B05-40 19 101	5/	19.1	101.6	79.3	44.5	63.5	80	1.79	18000
	1	7	4	AA3B05-40 25 101	5/	25.4	101.6	81.7	57.2	63.5	80	2.29	18000

For spare parts, visit www.sandvik.coromant.com

CAT-V to ISO 9766 adaptor

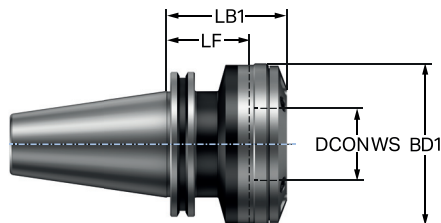
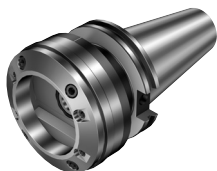
Machine side interface compatible with ASME B5.50-1985



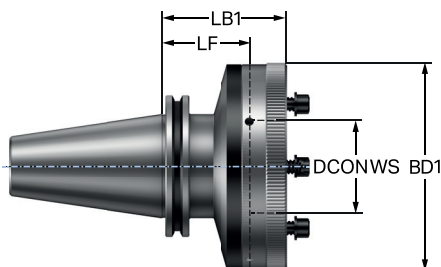
Metric bore

				Dimensions, mm										
CZC _{MS}	CZC _{WS}	CNSC	CXSC	Ordering code	CRKS	DCON _{WS}	LF	BD ₁	BAR	KG	RPMX			
40	40	7	1	A3B27-40 40 120	5/	40.0	120.0	75.0	80	2.92	16000			

CAT-V to ISO 9766 adjustable adaptor



				Dimensions, mm										
CZC _{MS}	CZC _{WS}	CNSC	CXSC	Ordering code	CRKS	DCON _{WS}	LF	LB ₁	BD ₁	BAR	KG	RPMX		
40	1	7	1	A392B.45277-40 01 055	5/	78.0	55.0	79.6	86.0	20	2.12	12000		
50	2	7	1	A392B.45277-50 02 055	1"	98.0	55.0	76.6	106.0	20	4.81	9000		

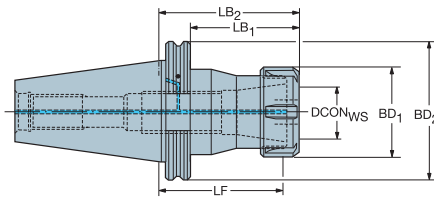


				Dimensions, mm										
CZC _{MS}	CZC _{WS}	CNSC	CXSC	Ordering code	CRKS	DCON _{WS}	LF	LB ₁	BD ₁	BAR	KG	RPMX		
50	3	7	1	A392B.45277-50 03 075	1"	136.0	75.0	85.0	140.0	20	6.61	6000		

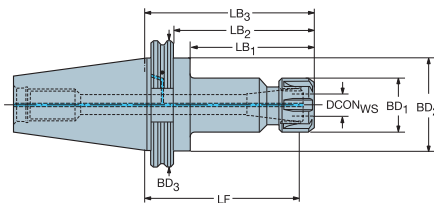
For spare parts, visit www.sandvik.coromant.com

CAT-V to ER collet chuck

Machine side interface compatible with ASME B5.50-1985



					Dimensions, mm									
CZC _{MS}	CZC _{WS}	CNSC	CXSC	Ordering code	CRKS	DCON _{WS}	LF	LB ₁	LB ₂	BD ₁	BD ₂	BAR	KG	RPMX
40	ER32	7	1	AA3B14-40 32 067	5/	33.0	54.0	47.1	67.0	50.0	63.5	80	1.08	18000
	ER40	7	1	AA3B14-40 40 067	5/	41.0	52.0	47.1	67.0	63.0	63.5	80	1.16	18000
	ER40	7	1	AA3B14-40 40 152	5/	41.0	137.4	132.5	152.4	63.0	63.5	80	2.97	16000



					Dimensions, mm											
CZC _{MS}	CZC _{WS}	CNSC	CXSC	Ordering code	CRKS	DCON _{WS}	LF	LB ₁	LB ₂	LB ₃	BD ₁	BD ₂	BD ₃	BAR	KG	RPMX
40	ER16	7	1	AA3B14-40 16 152	5/	17.0	141.8	114.1	132.5	152.4	28.0	44.5	63.5	80	1.40	16000
50	ER16	7	1	AA3B14-50 16 067	1"	17.0	56.4	31.9	47.1	67.0	28.0	69.9	98.4	80	3.16	12000
	ER16	7	1	AA3B14-50 16 152	1"	17.0	141.8	114.1	132.5	152.4	28.0	69.9	98.4	80	3.37	12000
	ER20	7	1	AA3B14-50 20 067	1"	21.0	55.5	31.9	47.1	67.0	34.0	69.9	98.4	80	3.18	12000
	ER20	7	1	AA3B14-50 20 152	1"	21.0	140.9	114.1	132.8	152.4	34.0	69.9	98.4	80	3.57	12000
	ER25	7	1	AA3B14-50 25 067	1"	26.0	55.0	31.9	47.1	67.0	42.0	69.9	98.4	80	3.16	12000
	ER25	7	1	AA3B14-50 25 152	1"	26.0	140.4	114.1	132.8	152.4	42.0	69.9	98.4	80	3.83	12000
	ER32	7	1	AA3B14-50 32 067	1"	33.0	54.0	31.9	47.1	67.0	50.0	69.9	98.4	80	3.15	12000
	ER32	7	1	AA3B14-50 32 152	1"	33.0	139.4	114.1	132.8	152.4	50.0	69.9	98.4	80	4.16	12000
	ER40	7	1	AA3B14-50 40 067	1"	41.0	52.0	31.9	47.1	67.0	63.0	69.9	98.4	80	3.17	12000

For spare parts, visit www.sandvik.coromant.com

Accessories

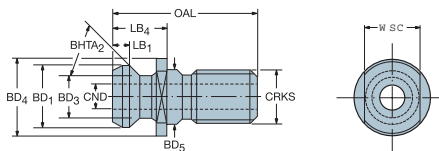
Pull studs	83
Dowel set	83
Sleeves and collets	84

For complete assortment, see www.sandvik.coromant.com

Pull studs

ENG

PS-VxxC



CAT-V

					Dimensions, mm										
CZC	CRKS	CNSC	CXSC	Ordering code	WSC	LB ₁	LB ₄	CND	BD ₁	BD ₃	BD ₄	BD ₅	BHTA ₂	OAL	Machine
40	5/8-11 UNC	1	1	PS-V40C-75-005	19	6	26	6	19	14	23.8	16.28	75	51.15	0.07
50	1-8 UNC	1	1	PS-V50C-90-001	30	10	45.15	8	22.95	17	38	26.18	90	85.2	0.28

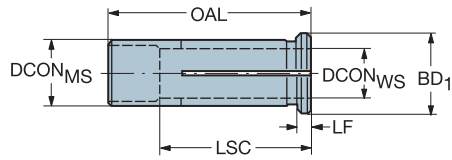
Dowel set



Ordering code	Ordering example
5643 017-01M	
5643 017-02M	Bag of 20 pieces

Cylindrical sleeve

Metallic sealed for coolant through tool



Inch bore

				Dimensions, inch									
CZC _{MS}	CZC _{WS}	CNSC	CXSC	Ordering code	DCON _{MS}	DCON _{WS}	BD	LSC	OAL	LF	PSI	LBS	
31	3/4	1	1	A393.CGS-31 12 60A	1.250	.750	1.417	2.362	2.520	.157	1160	.540	
	1	1	1	A393.CGS-31 16 60A	1.250	1.000	1.417	2.362	2.520	.157	1160	.370	

General information

ISO 13399	86
Coolant supply information	89
Safety information	90
Coromant Recycling Concept (CRC)	91

ISO 13399 is an international standard that strives to simplify the exchange of data for cutting tools. You will notice a slight difference through the new parameters and descriptions of each tool.

For the first time ever, there is a standardized way of describing product data regarding cutting tools. When all tools in the industry share the same parameters and definitions, communicating tool information becomes very straightforward.

What does this mean to you?

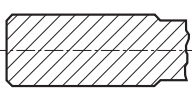
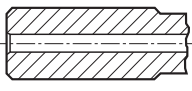
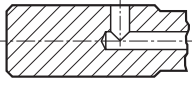
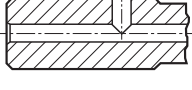
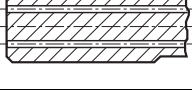
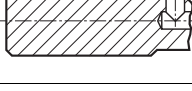
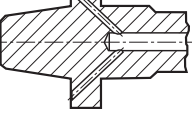
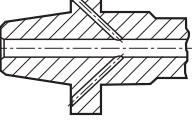
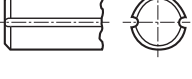
Basically, it means that your systems can talk to ours, as they all speak the same language. Download product data from our web site and use it directly in your CAD/CAM software to assemble tools that you use in production. No need to look for information in catalogues and interpret data from one system to another. Imagine how much time this will save you!

Short name	Preferred Name
ADJLN	Minimum adjustment limit
ADJLX	Maximum adjustment limit
ADJRG	Adjustment range
ALP	Clearance angle axial
AN	Clearance angle major
ANN	Clearance angle minor
APMX	Depth of cut maximum
APMX_EFW	Depth of cut maximum - end feed
APMX_FFW	Depth of cut maximum - side feed
AZ	Maximum plunge depth
B	Shank width
BAWS	Body angle workpiece side
BAMS	Body angle machine side
BBD	Balanced by design
BBR	Balanced by rotational test
BCH	Corner chamfer length
BD	Body diameter
BHTA	Body half taper angle
BN	Face land width
BS	Wiper edge length
BSG	Basic standard group
BSR	Wiper edge radius
CBMD	Chip breaker manufacturer
CDX	Cutting depth maximum
CEMR	Cutting edge major radius
CF	Spot chamfer
CHBA	Chamfer body angle
CHBL	Chamfer body length
CHW	Corner chamfer width
CICT	Cutting item count
CICT _{BALL}	Cutting item count - Ball nose insert
CICT _E	Cutting item count - end position
CICT _P	Cutting item count - peripheral position
CICT _S	Cutting item count - side position
CICT _{SP}	Cutting item count - Shank protection insert
CICT _T	Cutting item count - total
CND	Coolant entry diameter
CNSC	Coolant entry style code
CNT	Coolant entry thread size
COATING	Coating
CP	Max coolant pressure
CRKS	Connection retention knob thread size
CRNT	Coolant radial entry thread size
CTPT	Operation type
CUTDIA	Work piece parting diameter maximum
CW	Cutting width
CWN	Minimum cutting width
CWTOLL	Cutting width lower tolerance
CWTOLU	Cutting width upper tolerance
CWX	Cutting width maximum
CXSC	Coolant exit style code
CZC	Connection size code
CZC _{MS}	Connection size code machine side
CZC _{WS}	Connection size code workpiece side
D1	Fixing hole diameter
DAH	Diameter access hole
DAXIN	Axial groove inside diameter minimum
DAXN	Minimum axial groove outside diameter

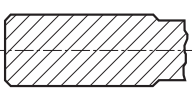
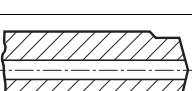
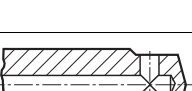

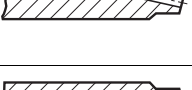

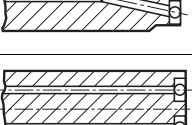
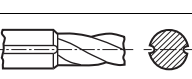
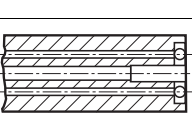
DAXX	Axial groove outside diameter maximum
DBC	Diameter bolt circle
DC	Cutting diameter
DCB	Connection bore diameter
DCBN	Connection bore diameter minimum
DCBX	Connection bore diameter maximum
DCF	Cutting diameter face contact
DCIN	Cutting diameter internal
DCN	Cutting diameter minimum
DCON	Connection diameter
DCON _{MS}	Connection diameter machine side
DCON _{WS}	Connection diameter workpiece side
DCONN _{WS}	Connection diameter minimum workpiece side
DCONX _{WS}	Connection diameter maximum workpiece side
DCPS	Data chip provision size
DCSF _{MS}	Contact surface diameter machine side
DCSF _{WS}	Contact surface diameter workpiece side
DCX	Cutting diameter maximum
DHUB	Hub diameter
DIX	Tool changer interference diameter maximum
DMIN	Minimum bore diameter
DMM	Shank diameter
DN	Neck diameter
DRVCT	Drive count
DSGN	Design
EPSR	Insert included angle
FHA	Flute helix angle
FLGT	Flange thickness
FTDZ	For thread diameter size
GB	Face land angle
H	Shank height
HA	Thread height theoretical
HB	Thread height difference
HBH	Head bottom offset height
HC	Thread height actual
HF	Functional height
HRY	Lowest point from reference plain
HSUP	Support height
HTB	Body height
HTH	Height
IC	Inscribed circle diameter
INSL	Insert length
INSUC	Insert usage code
IZC	Insert size code
KAPR	Tool cutting edge angle
KAPR_EFW	Tool cutting edge angle - end feed
KCH	Corner chamfer
KRINS	Major cutting edge angle
KWW	Keyway width
L	Cutting edge length
LAMS	Inclination angle
LB	Body length
LCF	Length chip flute
LCOX	Cut off length maximum
LE	Cutting edge effective length
LF	Functional length
LFN	Minimum functional length
LH	Head length
LPR	Protruding length
LS	Shank length
LSC	Clamping length
LSCN	Clamping length minimum
LSCS	Distance to clamping start
LSCX	Clamping length maximum
LSD	Dead shank length
LU	Usable length (max. recommended)
LU_BFW	Usable length - back facing
LUX	Usable length maximum
MHD	Mounting hole distance
MIID	Master insert identification
MIID _E	Master insert identification - end position
MIID _S	Master insert identification - side position
MIID _C	Master insert identification - central position
MIID _P	Master insert identification - peripheral position
MIID _I	Master insert identification - intermediate position
MMCC	Code for preset torque
MMCX	Max. cutting torque
NOF	Flute count
NT	Tooth count
OAH	Overall height
OAL	Overall length
OAW	Overall width
OH	Overhang recommended
OHN	Overhang minimum

OHX	Overhang maximum
ORDCODE	Ordercode
PCL	Peripheral cylindrical length
PDX	Profile distance ex
PDY	Profile distance ey
PHD	Premachined hole diameter
PHDX	Maximum premachined hole diameter
PL	Point length
PNA	Profile included angle
PRFRAD	Profile radius
PRSPC	Profile specification
PSIR	Tool lead angle
PSIRL	Cutting edge angle major left hand
PSIRR	Cutting edge angle major right hand
PSW	Premachined slot width
RADH	Radial body height
RADW	Radial body width
RAR	Right hand relief angle
RE	Corner radius
REEQ	Corner radius equivalent
REL	Corner radius left
RER	Corner radius right
RETOLL	Corner radius lower tolerance
RETOLU	Corner radius upper tolerance
RGL	Regrind length
RMPX	Maximum ramping angle
RPMX	Rotational speed maximum
S	Insert thickness
SDL	Step diameter length
SIG	Point angle
SPTL	Splitline
SSC	Insert seat size code
SSC _E	Insert seat size code - end position
SSC _P	Insert seat size code - peripheral position
SSC _S	Insert seat size code - side position
STA	Step included angle
STDNO	Standard number
SUBSTRATE	Substrate
TCDC	Tolerance class cutting diameter
TCDCON	Connection diameter tolerance
TCDDMM	Shank diameter tolerance
TCHA	Achievable hole tolerance
TCHAL	Achievable hole tolerance lower
TCHAU	Achievable hole tolerance upper
TCT	Tolerance class tool
TCTR	Thread tolerance class
TD	Thread diameter
TDZ	Thread diameter size
TFLA	Tap floating length ahead
TFLB	Tap floating length behind
TG	Taper gradient
THBTP	Thread back taper property
THCA	Thread helix correction angle
THCHT	Threading chamfer type
THFT	Form type
THFTS	Thread form standard series
THL	Thread length
THUB	Hub thickness
TP	Thread pitch
TPI	Threads per inch
TPIN	Threads per inch minimum
TPIX	Threads per inch maximum
TPN	Thread pitch minimum
TPT	Thread profile type
TPX	Maximum thread pitch
TRMAX	Tap range max
TQ	Torque
TSYC	Tool style code
TTP	Thread type
ULDR	Usable length diameter ratio
VCX	Maximum cutting speed
W1	Insert width
WB	Body width
WF	Functional width
WFCIRP	Width to cutting item reference point
WSC	Clamping width
WT	Weight of item
ZADJ	Insert adjustable count
ZEFF	Face effective cutting edge count
ZEFP	Peripheral effective cutting edge count (ZEFP)
ZWX	Maximum number of Wiper inserts

CNSC**Coolant entry style code**

Code	Description	Image
0	Without coolant	
1	Axial concentric entry	
2	Radial entry	
3	Axial concentric and radial entry	
4	Axial concentric entry on circle	
5	Radial entry before adaptor	
6	Decentral over flange	
7	Decentral over flange and axial	
8	Decentral over slots on the shank	

CXSC**Coolant exit style code**

Code	Description	Image
0	No coolant exit	
1	Axial concentric exit	
2	Radial exit	
3	Axial inclined exit	
4	Axial concentric on circle	
5	Axial inclined exit with nozzle, adjustable	
6	Decentral exit with nozzle, adjustable	
7	Decentral over slots on the shank	
8	Axial or decentral with nozzle, adjustable	

Safety information in connection with grinding of cemented carbide

Material composition

Most metal products contain tungsten carbide and cobalt. Other substances that may be present in hard metal are titanium carbide, tantalum carbide, niobium carbide, chromium carbide, molybdenum carbide or vanadium carbide. Some grades contain titanium carbonitride and/or nickel.

Routes of exposure

Grinding or heating of hard metal blanks or hard metal products will produce products that give off dangerous dust and fumes. Avoiding ingestion and contact with skin or eyes is very important.

Acute toxicity

Intake of the aforementioned substances is toxic. Inhalation may cause irritation and inflammation of the airways. Significantly higher acute inhalation toxicity has been reported during simultaneous inhalation of cobalt and tungsten carbide compared to inhalation of cobalt alone.

Skin contact can cause irritation and rash. Sensitive individuals may even experience an allergic reaction.

Chronic toxicity

Repeated inhalation of aerosols containing cobalt may cause obstruction of the airways. Prolonged exposure to increased concentrations may cause lung fibrosis or lung cancer. Epidemiological studies indicate that workers previously exposed to high concentrations of tungsten carbide/cobalt carried an increased risk of developing lung cancer.

Cobalt and nickel are potent skin sensitizers. Repeated or prolonged contact can cause irritation and sensitization.

Risk phrases

Toxic: danger of serious damage to health by prolonged exposure through inhalation

Toxic when inhaled

Limited evidence of a carcinogenic effect.

May cause sensitization by inhalation and skin contact

Preventive measures

Avoid formation and inhalation of dust. Use adequate local exhaust ventilation to keep personal exposure well below nationally authorised limits.

If ventilation is not available or adequate, use respirators appropriately approved for the purpose.

Use safety goggles or glasses with side shields when necessary.

Avoid repeated skin contact. Wear suitable gloves. Wash skin thoroughly after handling.

Use suitable protective clothing. Launder clothing if needed.

Do not eat, drink or smoke in the working area. Wash skin thoroughly before eating, drinking or smoking.



For the sake of the environment

Get into the Sandvik Coromant Recycling Concept (CRC) now!

The Sandvik Coromant Recycling Concept (CRC) is a comprehensive service for used carbide inserts and solid carbide tools offered by Sandvik Coromant to all its customers.

In the light of increasing consumption of non-renewable raw materials, the economic management of dwindling resources is a duty owed by all manufacturers.

Sandvik Coromant is playing its part by offering to collect used carbide inserts and solid carbide tools and recycle them in the most environmentally friendly way.

All used carbide inserts are collected in the collection box at the workplace.

When the collection box is sufficiently full, its contents are transferred to the transport box.

The full transport box is then sent to the nearest Sandvik Coromant office or to your Sandvik Coromant dealer who can also give you more information.

The benefits of the CRC speak for themselves

- A worldwide ISO and OHAS certified recycling system.
- Open to all Sandvik Coromant customers.
- Simple procedure with collection and transport boxes.
- Less waste, easing the burden on the environment.
- Better utilisation of resources.
- Other manufacturers' carbide inserts are also accepted.



Order collection boxes for each lathe, milling machine, drill or for your machining centre. We recommend one collection box for inserts and one separate box for solid carbide tools for each cutting workplace.

For detailed instructions on how to sell your used cemented carbide, please visit www.sandvik.coromant.com and select your market.

Collection box:	Order numbers
Transport box for solid carbide tools (plywood):	91617
Transport box inserts (plywood):	92994
	92995

