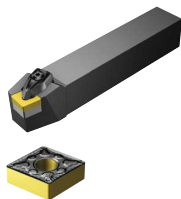


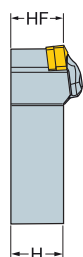
# T-Max® P shank tool for turning

Rigid clamp design

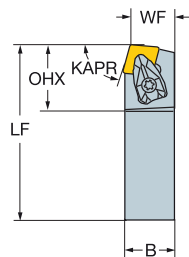
B



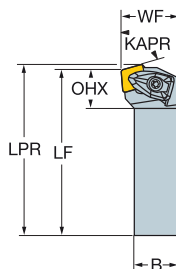
KAPR



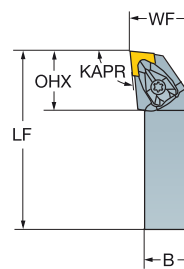
DCBNR/L  
75.0°



DCKNR/L  
75.0°



DCLNR/L  
95.0°



C

- CNMM
- CNMG
- CNMA, CNGA

D

CZC <sub>MS</sub>	OHX	Ordering code	Dimensions, mm							NM	KG	MIID	
			B	H	LPR	LF	WF	HF					
	12	20 x 20	34.2	DCBNR/L 2020K 12	20.0	20.0	125.0	17.0	20.0	3.9	0.43	CNMG 12 04 08	
		25 x 25	34.6	DCBNR/L 2525M 12	25.0	25.0	150.0	22.0	25.0	3.9	0.76	CNMG 12 04 08	
		32 x 25	34.6	DCBNR/L 3225P 12	25.0	32.0	170.0	22.0	32.0	3.9	1.09	CNMG 12 04 08	
		32 x 32	34.2	DCBNR/L 3232P 12	32.0	32.0	170.0	27.0	32.0	3.9	1.35	CNMG 12 04 08	
	16	25 x 25	41.5	DCBNR/L 2525M 16	25.0	25.0	150.0	22.0	25.0	6.4	0.79	CNMG 16 06 12	
		32 x 25	32.0	DCBNR/L 3225P 16	25.0	32.0	170.0	22.0	32.0	6.4	1.11	CNMG 16 06 12	
	16	32 x 32	41.6	DCBNR/L 3232P 16	32.0	32.0	170.0	27.0	32.0	6.4	1.39	CNMG 16 06 12	
	19	32 x 32	46.1	DCBNR/L 3232P 19	32.0	32.0	170.0	27.0	32.0	6.4	1.39	CNMG 19 06 12	
	12	20 x 20	21.2	DCKNR/L 2020K 12	20.0	20.0	128.1	125.0	25.0	20.0	3.9	0.46	CNMG 12 04 08
		25 x 25	21.2	DCKNR/L 2525M 12	25.0	25.0	153.1	150.0	32.0	25.0	3.9	0.80	CNMG 12 04 08
		32 x 25	21.3	DCKNR/L 3225P 12	25.0	32.0	173.1	170.0	32.0	32.0	3.9	1.10	CNMG 12 04 08
	16	32 x 32	27.1	DCKNR/L 3232P 16	32.0	32.0	173.8	170.0	40.0	32.0	6.4	1.44	CNMG 16 06 12
	09	16 x 16	24.8	DCLNR/L 1616H 09	16.0	16.0	100.0	20.0	16.0	1.7	0.22	CNMG 09 03 08	
		20 x 20	24.8	DCLNR/L 2020K 09	20.0	20.0	125.0	25.0	20.0	1.7	0.43	CNMG 09 03 08	
		25 x 25	24.8	DCLNR/L 2525M 09	25.0	25.0	150.0	32.0	25.0	1.7	0.75	CNMG 09 03 08	
	12	16 x 16	32.2	DCLNR/L 1616H 12	16.0	16.0	100.0	20.0	16.0	3.9	0.26	CNMG 12 04 08	
		20 x 20	32.0	DCLNR/L 2020K 12	20.0	20.0	125.0	25.0	20.0	3.9	0.44	CNMG 12 04 08	
		25 x 25	32.0	DCLNR/L 2525M 12	25.0	25.0	150.0	32.0	25.0	3.9	0.77	CNMG 12 04 08	
		32 x 25	32.0	DCLNR/L 3225P 12	25.0	32.0	170.0	32.0	32.0	3.9	1.11	CNMG 12 04 08	
		32 x 32	32.2	DCLNR/L 3232P 12	32.0	32.0	170.0	40.0	32.0	3.9	1.38	CNMG 12 04 08	
	16	25 x 25	39.0	DCLNR/L 2525M 16	25.0	25.0	150.0	32.0	25.0	6.4	0.81	CNMG 16 06 12	
		32 x 25	39.0	DCLNR/L 3225P 16	25.0	32.0	170.0	32.0	32.0	6.4	1.13	CNMG 16 06 12	
		32 x 32	39.0	DCLNR/L 3232P 16	32.0	32.0	170.0	40.0	32.0	6.4	1.41	CNMG 16 06 12	
	19	25 x 25	43.7	DCLNR/L 2525M 19	25.0	25.0	150.0	32.0	25.0	6.4	0.82	CNMG 19 06 12	
	32 x 32	43.2	DCLNR/L 3232P 19	32.0	32.0	170.0	40.0	32.0	6.4	1.41	CNMG 19 06 12		

R = Right hand, L = Left hand

F

G

Spare parts				
CZC <sub>MS</sub>	Shim screw	Shim	Clamp set	
09	16 x 16-25 x 25	5513 020-04	5322 236-04	5412 028-011
12	16 x 16	5513 020-02	5322 236-03	5412 028-021
12	20 x 20-32 x 32	5513 020-02	5322 234-01	5412 028-021
16	25 x 25-32 x 32	5513 020-07	5322 234-04	5412 028-031
19	25 x 25-32 x 32	5513 020-07	5322 236-01	5412 028-041

For complete list of spare parts, see [www.sandvik.coromant.com](http://www.sandvik.coromant.com)

H

