



PREVIEW  
**NEW PRODUCTS**

2023.1

Authorized distributor for

**DORMER PRAMET**



# NEW PRODUCTS 2023.1 – INDEXABLE TURNING

## T9415

NEW GENERATION MT-CVD GRADE



### FIRST CHOICE GRADE

for various steel (ISO-P) turning.

### TOOL LIFE AND PRODUCTIVITY

significantly increased compared to previous grades.

### IMPROVED RELIABILITY,

especially in unstable conditions.

### HIGH PRECISION

improves indexing accuracy and reduces idle time.

### REDUCED CUTTING FORCES

and enhanced performance.

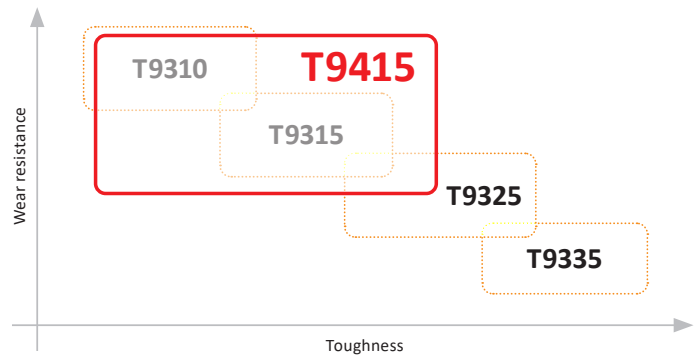
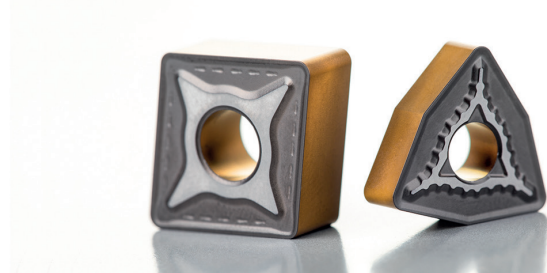
### BETTER SEATING STABILITY

and improved overall tool life.

### SUSTAINABLE

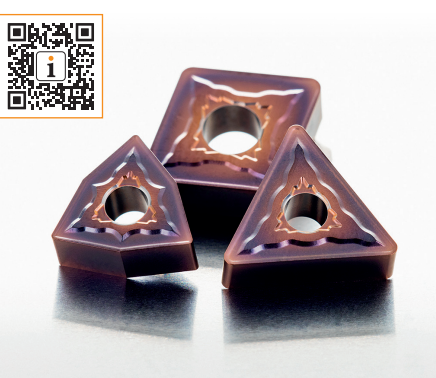
and environmentally friendly offer.

### EASIER WEAR DETECTION.



## T8430

ADDITIONAL  
CHIPBREAKERS AND RADIUS



### VERSATILE

usage for a broad range of operations.

### TOOL LIFE

greatly improved, especially in steels.

### PRODUCTIVITY

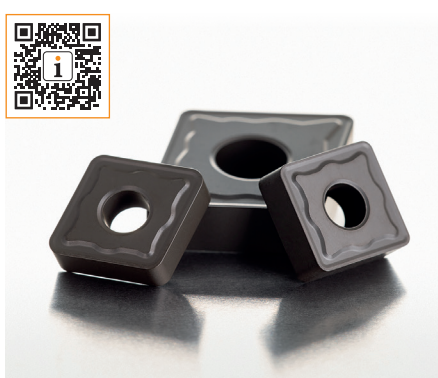
increased due to wider feed rate range.

### APPLICATION RANGE

expanded for most workpiece materials.

## KR

CAST IRON  
TURNING EXPANSION



### RELIABLE AND SECURE

cutting process in cast iron turning.

### LONG TOOL LIFE

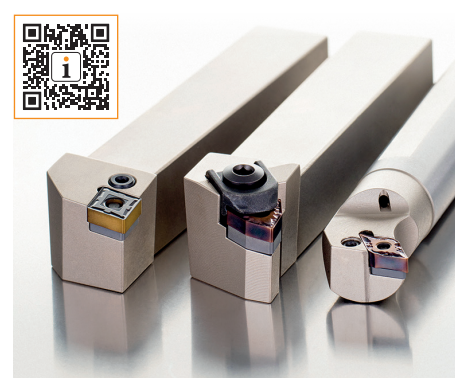
achieved in abrasive materials.

### APPLICATION RANGE

expanded for heavier operations.

## P & M

NEW LINE OF TOOLS  
FOR NEGATIVE INSERTS



## S-TYPE

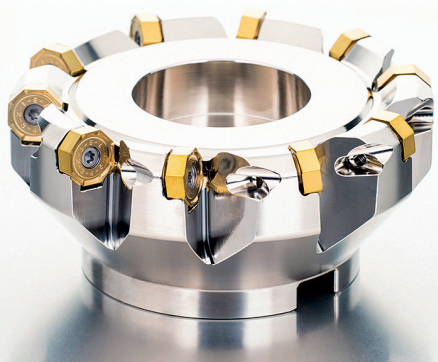
SLIDING HEAD  
TURNING TOOLS



## NEW PRODUCTS 2023.1 – INDEXABLE MILLING

### SON06C

ECONOMICAL 16-EDGED FACE MILLING



#### 16 CUTTING EDGES

for even greater economy and cost saving.

#### EASY TO SELECT

a geometry for light, medium or rough cuts.

#### VERSATILE USE

in wide range of workpiece materials.

#### 8 CUTTING EDGES

insert SNMX for depth of cut up to 7 mm.

#### HIGH METAL REMOVAL RATE

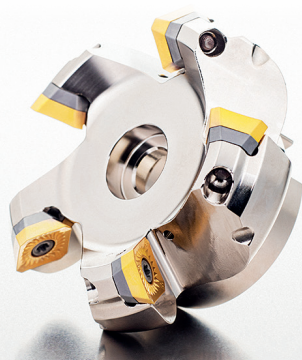
in economical solution.

#### HIGH SURFACE QUALITY

in larger diameter cutters and higher feeds.

### SSD13F

VERSATILE FACE MILLING



### SNGX 11

STRONG HIGH FEED GEOMETRY – HM



### SBN10

ADDITIONAL SHELL MILL CUTTERS



### SWN04C

HIGH PRECISION CUTTERS REVAMPED



### SLN12X

PRODUCTIVE TANGENTIAL SHOULDER MILLING



#### PRODUCTIVE SOLUTION

for a wide range of applications, with increased feed per tooth and depth of cut.

#### SMOOTH CUTTING ACTION

reduced spindle load, excellent chip evacuation and process stability.

#### TRUE 90° CORNER

with improved wall accuracy and straightness.

#### IMPROVED CHIP EVACUATION

expands application range for low-power machines and small depths of cut.

#### OPERATIONAL VERSATILITY

offering an economic solution.



**SOUTHERN CUTTING TECHNOLOGY**

9/18 Taurus Place, Bromley, Christchurch 8062

Phone: 03 338 4169

Email: [admin@southern-cut.co.nz](mailto:admin@southern-cut.co.nz)

[www.southern-cut.co.nz](http://www.southern-cut.co.nz)

**FOLLOW US... DORMER PRAMET**



ONLINE



SEGMENTS



LIBRARY APP.



CALCULATOR APP.